

## Anti-Synaptotagmin XIII Antibody

Catalog Number: A13202-1

### About SYT13

COBRA1 (cofactor of BRCA1) also known as NELF-B, is an essential component of the negative elongation factor (NELF) complex. COBRA1 has been shown to directly bind estrogen receptor alpha (ERalpha) and repress ERalpha-mediated transcription (Aiyar SE et al., 2004). COBRA1 has also been demonstrated to interact with c-Jun and c-Fos suggesting a role in modulation of the AP-1 pathway and therefore may be important in cell proliferation, differentiation, apoptosis and oncogenesis (Zhong H et al., 2004)

### Overview

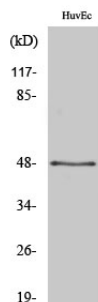
|                      |  |
|----------------------|--|
| Product Name         | Anti-Synaptotagmin XIII Antibody   |
| Reactive Species     | Human, Mouse, Rat  |
| Description          | Boster Bio Anti-Synaptotagmin XIII Antibody catalog # A13202-1. Tested in WB applications. This antibody reacts with Human, Mouse, Rat.    |
| Application          | WB   |
| Clonality            | Polyclonal 2H4   |
| Formulation          | Liquid in PBS containing 50% glycerol, 0.5% BSA and 0.02% sodium azide.  |
| Storage Instructions | Store at -20°C for one year. For short term storage and frequent use, store at 4°C for up to one month. Avoid repeated freeze-thaw cycles. |
| Host                 | Rabbit   |
| Uniprot ID           | Q7L8C5   |

### Technical Details

|                            |  |
|----------------------------|--|
| Immunogen                  | Synthesized peptide derived from the Internal region of human Synaptotagmin XIII. at AA range: 290-370   |
| Predicted Reactive Species | Canine, Equine, Pig  |
| Isotype                    | IgG  |
| Form                       | Liquid   |
| Concentration              | This antibody's concentration is >0.5mg/ml.  |
| Purification               | Immunogen affinity purified  |
| Suggested Dilutions        | Dilute the sample so that the expected range of concentrations fall within the detection range of this kit.<br>If the expected range of concentration is unknown, a pilot test should be conducted to decide the |

optimal dilution ratio for your samples.  
Some PubMed article(s) citing the expression level of this target are as follows:  
Boster Bio's internal QC testing used:  
WB, 1:500-1:2000

## Anti-Synaptotagmin XIII Antibody (A13202-1) Images



Western Blot (WB) analysis of specific cells using Synaptotagmin XIII Polyclonal antibody.

### Submit a product review to Biocompare.com

Submit a review of this product to Biocompare.com to receive a \$20 Amazon.com giftcard! Your reviews help your fellow scientists make the right decisions. Thank you for your contribution.



Anti-Synaptotagmin XIII Antibody