

Anti-LRFN1 Antibody

Catalog Number: A13222

About LRFN1

LRFN1 is one of a family of five transmembrane glycoproteins that are highly expressed in neuronal tissues. LRFN proteins share leucine-rich repeat (LRR)-immunoglobulin-like (Ig)-fibronectin type III (Fn)-transmembrane domain structure with other members of the LRR-Ig-Fn protein superfamily such as the Slitrk family of proteins. Expression of LRFN1, -3, and -4 mRNA was detected in embryonic neuronal cells, while Lrnf2 and Lrnf5 expression was primarily restricted to more mature cells. LRFN1, -2, and -4 bound to PDZ domains of postsynaptic PSD95, re-distributing PSD95 to the cell periphery. It has been suggested that the Lrnf proteins play a role in the developing and/or mature vertebrate nervous system. At least two isoforms of LRFN1 are known to exist.

Overview

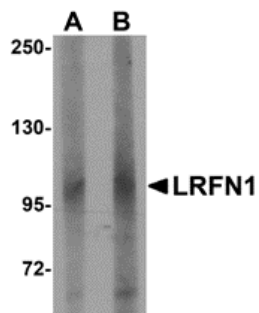
Product Name	Anti-LRFN1 Antibody
Reactive Species	Human, Mouse, Rat
Description	Boster Bio Anti-LRFN1 Antibody (Catalog # A13222). Tested in ELISA, WB, IHC-P, IF applications. This antibody reacts with Human, Mouse, Rat.
Application	ELISA, IF, IHC-P, WB
Clonality	Polyclonal
Formulation	LRFN1 Antibody is supplied in PBS containing 0.02% sodium azide.
Storage Instructions	LRFN1 antibody can be stored at 4°C for three months and -20°C, stable for up to one year. Avoid repeated freeze-thaw cycles. Antibodies should not be exposed to prolonged high temperatures.
Host	Rabbit
Uniprot ID	Q9P244

Technical Details

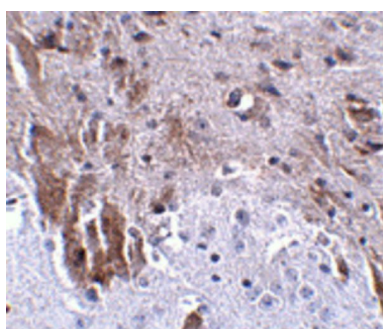
Immunogen	LRFN1 antibody was raised against an 18 amino acid synthetic peptide near the carboxy terminus of human LRFN1. The immunogen is located within amino acids 700 - 750 of LRFN1.
Predicted Reactive Species	Bovine
Cross Reactivity	This antibody is predicted to not cross-react with other members of the LRFN family.
Isotype	IgG
Form	Liquid
Concentration	1 mg/mL

Purification	LRFN1 Antibody is affinity chromatography purified via peptide column.
Suggested Dilutions	LRFN1 antibody can be used for detection of LRFN1 by Western blot at 1 - 2 ug/mL. Antibody can also be used for immunohistochemistry starting at 2.5 ug/mL. For immunofluorescence start at 20 ug/mL. Antibody validated: Western Blot in human samples; Immunohistochemistry in mouse samples and Immunofluorescence in mouse samples. All other applications and species not yet tested. Optimal dilutions for each application should be determined by the researcher.

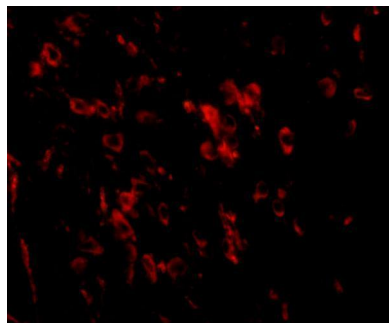
Anti-LRFN1 Antibody (A13222) Images



Western blot analysis of LRFN1 in human brain lysate with LRFN1 antibody at (A) 1 and (B) 2 ug/mL.



Immunohistochemistry of LRFN1 in mouse brain tissue with LRFN1 antibody at 2.5 ug/mL.



Immunofluorescence of LRFN1 in mouse brain tissue with LRFN1 antibody at 20 ug/mL.

Submit a product review to [Biocompare.com](https://www.biocompare.com)

Submit a review of this product to [Biocompare.com](https://www.biocompare.com) to receive a \$20 Amazon.com giftcard! Your reviews help your fellow scientists make the right decisions. Thank you for your contribution.



Anti-LRFN1 Antibody

For Research Use Only. Not for use in diagnostic procedures.