

## Anti-IGSF6 Antibody Picoband®

Catalog Number: A13228

### About IGSF6

Predicted to enable transmembrane signaling receptor activity. Predicted to be involved in cell surface receptor signaling pathway and immune response. Predicted to be located in plasma membrane.

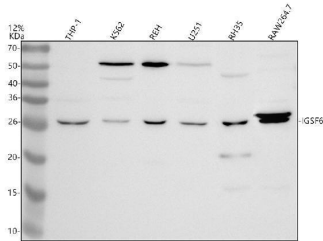
### Overview

Product Name	Anti-IGSF6 Antibody Picoband®
Reactive Species	Human, Mouse, Rat
Description	Boster Bio Anti-IGSF6 Antibody Picoband® catalog # A13228. Tested in WB, Flow Cytometry, ELISA applications. This antibody reacts with Human, Mouse, Rat. The brand Picoband indicates this is a premium antibody that guarantees superior quality, high affinity, and strong signals with minimal background in Western blot applications. Only our best-performing antibodies are designated as Picoband, ensuring unmatched performance.
Application	ELISA, Flow Cytometry, WB
Clonality	Polyclonal
Formulation	Each vial contains 4 mg Trehalose, 0.9 mg NaCl, 0.2 mg Na <sub>2</sub> HPO <sub>4</sub> .
Storage Instructions	At -20°C for one year from date of receipt. After reconstitution, at 4°C for one month. It can also be aliquotted and stored frozen at -20°C for six months. Avoid repeated freezing and thawing.
Host	Rabbit
Uniprot ID	O95976

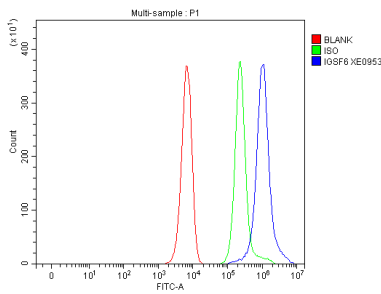
### Technical Details

Immunogen	E.coli-derived human IGSF6 recombinant protein (Position: L38-P241).
Form	Lyophilized
Concentration	Adding 0.2 ml of distilled water will yield a concentration of 500 ug/ml.
Purification	Immunogen affinity purified.
Suggested Dilutions	Western blot, 0.25-0.5 ug/ml, Human, Mouse, Rat Flow Cytometry (Fixed), 1-3 ug/1x10 <sup>6</sup> cells, Human ELISA, 0.1-0.5 ug/ml

## Anti-IGSF6 Antibody Picoband® (A13228) Images



Western blot analysis of IGSF6 using anti-IGSF6 antibody (A13228). Electrophoresis was performed on a 12% SDS-PAGE gel at 80V (Stacking gel) / 120V (Resolving gel) for 2 hours. The sample well of each lane was loaded with 30 ug of sample under reducing conditions. Lane 1: human THP-1 whole cell lysates, Lane 2: human K562 whole cell lysates, Lane 3: human REH whole cell lysates, Lane 4: human U251 whole cell lysates, Lane 5: rat RH35 whole cell lysates, Lane 6: mouse RAW264.7 whole cell lysates. After electrophoresis, proteins were transferred to a nitrocellulose membrane at 150 mA for 50-90 minutes. Blocked the membrane with 5% non-fat milk/TBS for 1.5 hour at RT. The membrane was incubated with rabbit anti-IGSF6 antigen affinity purified polyclonal antibody (A13228) at 0.5 ug/mL overnight at 4°C, then washed with TBS-0.1% Tween 3 times with 5 minutes each and probed with a goat anti-rabbit IgG-HRP secondary antibody at a dilution of 1:5000 for 1.5 hour at RT. The signal is developed using an ECL Plus Western Blotting Substrate (Catalog # AR1196-200) with Tanon 5200 system. A specific band was detected for IGSF6 at approximately 27 kDa. The expected band size for IGSF6 is at 27 kDa.



Flow Cytometry analysis of K562 cells using anti-IGSF6 antibody (A13228). Overlay histogram showing K562 cells stained with A13228 (Blue line). The cells were fixed with 4% paraformaldehyde and blocked with 10% normal goat serum. And then incubated with rabbit anti-IGSF6 Antibody (A13228, 1 ug/1x10<sup>6</sup> cells) for 30 min at 20°C. Fluoro488 conjugated goat anti-rabbit IgG (BA1127, 5-10 ug/1x10<sup>6</sup> cells) was used as secondary antibody for 30 minutes at 20°C. Isotype control antibody (Green line) was rabbit IgG (1 ug/1x10<sup>6</sup>) used under the same conditions. Unlabelled sample without incubation with primary antibody and secondary antibody (Red line) was used as a blank control.

**Submit a product review to Biocompare.com**

Submit a review of this product to Biocompare.com to receive a \$20 Amazon.com giftcard! Your reviews help your fellow scientists make the right decisions. Thank you for your contribution.



Anti-IGSF6 Antibody

For Research Use Only. Not for use in diagnostic procedures.