

Anti-ZCRB1 Antibody

Catalog Number: A13254

About ZCRB1

ZCRB1 is a nuclear protein first identified in a differential display screen involving morphine-dependence-related genes. Its expression is increased following morphine treatment and has been observed to be elevated in HepG2 cells. ZCRB1 contains a CCHC-type zing finger RNA-binding motif and can interact with the DBA-binding domain of the stem cell regulator C/EBP transcription factors. ZCRB1 was identified as one of the protein components of U11/U12 snRNPs, which are components of U12-type spliceosome and function as a molecular bridge connecting both ends of the intron, suggesting ZCRB1 may play a key role in U12-type splicing.

Overview

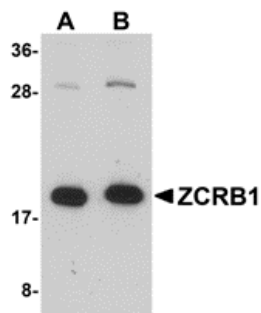
Product Name	Anti-ZCRB1 Antibody
Reactive Species	Human, Mouse, Rat
Description	Boster Bio Anti-ZCRB1 Antibody (Catalog # A13254). Tested in ELISA, WB applications. This antibody reacts with Human, Mouse, Rat.
Application	ELISA, WB
Clonality	Polyclonal
Formulation	ZCRB1 Antibody is supplied in PBS containing 0.02% sodium azide.
Storage Instructions	ZCRB1 antibody can be stored at 4°C for three months and -20°C, stable for up to one year. Avoid repeated freeze-thaw cycles. Antibodies should not be exposed to prolonged high temperatures.
Host	Rabbit
Uniprot ID	Q8TBF4

Technical Details

Immunogen	ZCRB1 antibody was raised against a 17 amino acid synthetic peptide near the carboxy terminus of human ZCRB1. The immunogen is located within the last 50 amino acids of ZCRB1.
Predicted Reactive Species	Bovine
Isotype	IgG
Form	Liquid
Concentration	1 mg/mL
Purification	ZCRB1 Antibody is affinity chromatography purified via peptide column.
Suggested Dilutions	ZCRB1 antibody can be used for detection of ZCRB1 by Western blot at 1 - 2 ug/mL. Antibody validated: Western Blot in human samples. All other applications and species not yet

tested. Optimal dilutions for each application should be determined by the researcher.

Anti-ZCRB1 Antibody (A13254) Images



Western blot analysis of ZCRB1 in Raji cell lysate with ZCRB1 antibody at (A) 1 and (B) 2 ug/mL.

Submit a product review to Biocompare.com

Submit a review of this product to Biocompare.com to receive a \$20 Amazon.com giftcard! Your reviews help your fellow scientists make the right decisions. Thank you for your contribution.



Anti-ZCRB1 Antibody

For Research Use Only. Not for use in diagnostic procedures.