

Anti-LGI2 Antibody

Catalog Number: A13256-1

About LGI2

The leucine-rich, glioma inactivated gene 2 (LGI2) is a member of the LGI family in which LGI1 is the exemplar. The LGI family consists of four of highly related proteins containing leucine-rich repeats (LRRs) which are highly similar to other transmembrane signaling molecules and receptors. LGI1 has been identified as a candidate tumor suppressor gene for glioma and plays a role in autodominant lateral temporal epilepsy (ADTLE), an epileptic syndrome characterized by focal seizures with predominant auditory symptoms. Despite its high homology with LGI1 and similar pattern of expression, mutations in LGI2 have not been found to be associated with ADTLE.

Overview

Product Name	Anti-LGI2 Antibody
Reactive Species	Human, Mouse
Description	Boster Bio Anti-LGI2 Antibody (Catalog # A13256-1). Tested in ELISA, WB, IHC-P, IF applications. This antibody reacts with Human, Mouse.
Application	ELISA, IF, IHC-P, WB
Clonality	Polyclonal
Formulation	LGI2 Antibody is supplied in PBS containing 0.02% sodium azide.
Storage Instructions	LGI2 antibody can be stored at 4°C for three months and -20°C, stable for up to one year. Avoid repeated freeze-thaw cycles. Antibodies should not be exposed to prolonged high temperatures.
Host	Rabbit
Uniprot ID	Q8K4Z0

Technical Details

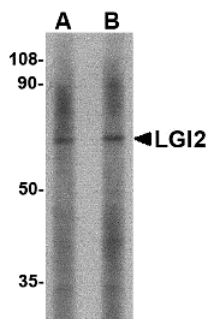
Immunogen	LGI2 antibody was raised against a 10 amino acid synthetic peptide from near the center of human LGI2. The immunogen is located within amino acids 290 - 340 of LGI2.
Predicted Reactive Species	Bovine
Cross Reactivity	This LGI2 antibody is predicted to be specific to LGI2 and not recognize other LGI proteins. Three isoforms of LGI2 are known to exist; this LGI2 antibody will recognize only the longest.
Isotype	IgG
Form	Liquid
Concentration	1 mg/mL
Purification	LGI2 Antibody is affinity chromatography purified via peptide column.

Suggested Dilutions

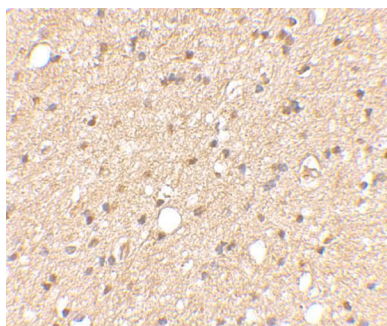
LGI2 antibody can be used for the detection of LGI2 by Western blot at 1 - 2 ug/mL. Antibody can also be used for immunohistochemistry starting at 2.5 ug/mL. For immunofluorescence start at 5 ug/mL.

Antibody validated: Western Blot in mouse samples; Immunohistochemistry in human samples and Immunofluorescence in human samples. All other applications and species not yet tested. Optimal dilutions for each application should be determined by the researcher.

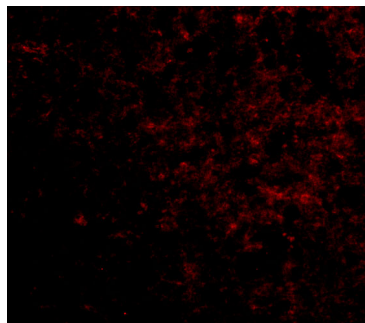
Anti-LGI2 Antibody (A13256-1) Images



Western blot analysis of LGI2 in mouse liver tissue lysate with LGI2 antibody at (A) 1 and (B) 2 ug/mL.



Immunohistochemical staining of human brain tissue using LGI2 antibody at 2.5 ug/mL.



Immunofluorescence of LGI2 in Human Brain cells with LGI2 antibody at 5 ug/mL.

Submit a product review to [Biocompare.com](https://www.biocompare.com)

Submit a review of this product to [Biocompare.com](https://www.biocompare.com) to receive a \$20 Amazon.com giftcard! Your reviews help your fellow scientists make the right decisions. Thank you for your contribution.



Anti-LGI2 Antibody

For Research Use Only. Not for use in diagnostic procedures.