

## Anti-GIDRP88 R3HCC1L Antibody

Catalog Number: A13305

### About R3HCC1L

3 isoforms of the human protein are produced by alternative splicing.

Yan J., Submitted (JUN-2002) to the EMBL/GenBank/DDBJ databases.

Deloukas P., Nature 429:375-381(2004).

The MGC Project Team; Genome Res. 14:2121-2127(2004).

### Overview

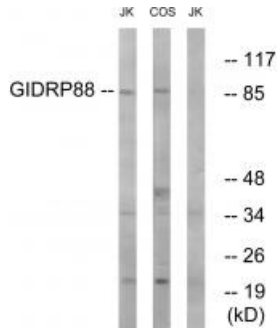
Product Name	Anti-GIDRP88 R3HCC1L Antibody
Reactive Species	Human, Mouse
Description	Boster Bio Anti-GIDRP88 R3HCC1L Antibody (Catalog # A13305). Tested in WB, IHC applications. This antibody reacts with Human, Mouse.
Application	IHC, WB
Clonality	Polyclonal
Formulation	Rabbit IgG in phosphate buffered saline (without Mg <sup>2+</sup> and Ca <sup>2+</sup> ), pH 7.4, 150mM NaCl, 0.02% sodium azide and 50% glycerol.
Storage Instructions	Store at -20°C for one year. For short term storage and frequent use, store at 4°C for up to one month. Avoid repeated freeze-thaw cycles.
Host	Rabbit
Uniprot ID	Q7Z5L2

### Technical Details

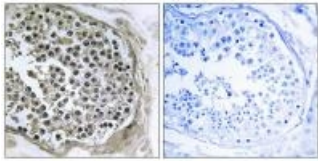
Immunogen	Synthesized peptide derived from internal of human GIDRP88.
Predicted Reactive Species	Chimpanzee, Drosophila, Macaque
Isotype	IgG
Form	Liquid
Concentration	1 mg/ml
Purification	The antibody was affinity-purified from rabbit antiserum by affinity-chromatography using epitope-specific immunogen.
Suggested Dilutions	Western blotting: 1:500~1:3000

Immunohistochemistry: 1:50~1:100

## Anti-GIDRP88 R3HCC1L Antibody (A13305) Images



Western blot analysis of extracts from Jurkat cells and COS cells, using GIDRP88 antibody A13305.



Immunohistochemistry analysis of paraffin-embedded human tonsil tissue using GIDRP88 antibody A13305.

### Submit a product review to [Biocompare.com](https://www.biocompare.com)

Submit a review of this product to [Biocompare.com](https://www.biocompare.com) to receive a \$20 Amazon.com giftcard! Your reviews help your fellow scientists make the right decisions. Thank you for your contribution.



Anti-GIDRP88 R3HCC1L Antibody