

Anti-RILPL1 Antibody Picoband®

Catalog Number: A13355-1

About RILPL1

While the function of the Rab interacting lysosomal protein-like 1 (RILPL1) remains unknown, the homologous protein RILP is a small GTPase that controls transport to endocytic compartments, suggesting RILPL1 may have similar functions. However, overexpression of RILP caused enlarged lysosomes that are more centrally located in the cell, while overexpression of RILPL1 had no visible effect on the location or morphology of lysosomes.

Overview

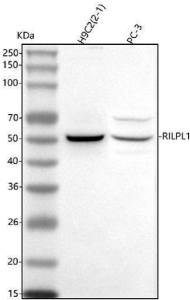
Product Name	Anti-RILPL1 Antibody Picoband®
Reactive Species	Human, Rat
Description	Boster Bio Anti-RILPL1 Antibody Picoband® catalog # A09697. Tested in WB, ELISA applications. This antibody reacts with Human, Rat. The brand Picoband indicates this is a premium antibody that guarantees superior quality, high affinity, and strong signals with minimal background in Western blot applications. Only our best-performing antibodies are designated as Picoband, ensuring unmatched performance.
Application	ELISA, WB
Clonality	Polyclonal
Formulation	Each vial contains 4 mg Trehalose, 0.9 mg NaCl, 0.2 mg Na ₂ HPO ₄ .
Storage Instructions	At -20°C for one year from date of receipt. After reconstitution, at 4°C for one month. It can also be aliquotted and stored frozen at -20°C for six months. Avoid repeated freezing and thawing.
Host	Rabbit
Uniprot ID	Q5EBL4

Technical Details

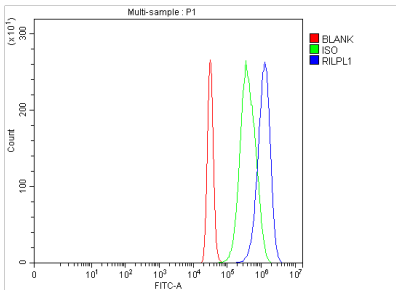
Immunogen	E.coli-derived human RILPL1 recombinant protein (Position: E3-K324). Human RILPL1 shares 93.2% and 93.5% amino acid (aa) sequence identity with mouse and rat RILPL1, respectively.
Recommended Detection Systems	Boster recommends Enhanced Chemiluminescent Kit with anti-Rabbit IgG (EK1002) for Western blot.
Cross Reactivity	No cross reactivity with other proteins.
Isotype	IgG
Form	Lyophilized
Concentration	Adding 0.2 ml of distilled water will yield a concentration of 500 µg/ml.

Purification	Immunogen affinity purified.
Suggested Dilutions	Western blot, 0.25-0.5 ug/ml, Human, Rat ELISA, 0.1-0.5 ug/ml, -

Anti-RILPL1 Antibody Picoband® (A13355-1) Images



Western blot analysis of RILPL1 using anti-RILPL1 antibody (A13355-1). Electrophoresis was performed on a 5-20% SDS-PAGE gel at 70V (Stacking gel) / 90V (Resolving gel) for 2-3 hours. The sample well of each lane was loaded with 30 ug of sample under reducing conditions. Lane 1: human H9C2(2-1) whole cell lysates, Lane 2: human PC-3 whole cell lysates. After electrophoresis, proteins were transferred to a nitrocellulose membrane at 150 mA for 50-90 minutes. Blocked the membrane with 5% non-fat milk/TBS for 1.5 hour at RT. The membrane was incubated with rabbit anti-RILPL1 antigen affinity purified polyclonal antibody (Catalog # A13355-1) at 0.5 ug/mL overnight at 4°C, then washed with TBS-0.1%Tween 3 times with 5 minutes each and probed with a goat anti-rabbit IgG-HRP secondary antibody at a dilution of 1:5000 for 1.5 hour at RT. The signal is developed using an Enhanced Chemiluminescent detection (ECL) kit (Catalog # EK1002) with Tanon 5200 system. A specific band was detected for RILPL1 at approximately 50 kDa. The expected band size for RILPL1 is at 47 kDa.



Flow Cytometry analysis of 293T cells using anti-RILPL1 antibody (A13355-1). Overlay histogram showing 293T cells stained with A13355-1 (Blue line). To facilitate intracellular staining, cells were fixed with 4% paraformaldehyde and permeabilized with permeabilization buffer. The cells were blocked with 10% normal goat serum. And then incubated with rabbit anti-RILPL1 Antibody (A13355-1, 1 ug/1x10⁶ cells) for 30 min at 20°C. DyLight®488 conjugated goat anti-rabbit IgG (BA1127, 5-10 ug/1x10⁶ cells) was used as secondary antibody for 30 minutes at 20°C. Isotype control antibody (Green line) was rabbit IgG (1 ug/1x10⁶) used under the same conditions. Unlabelled sample (Red line) was also used as a control.

Submit a product review to Biocompare.com

Submit a review of this product to Biocompare.com to receive a \$20 Amazon.com giftcard! Your reviews help your fellow scientists make the right decisions. Thank you for your contribution.



Anti-RILPL1 Antibody

For Research Use Only. Not for use in diagnostic procedures.