

Anti-Cytochrome P450 4Z1 CYP4Z1 Antibody

Catalog Number: A13386-1

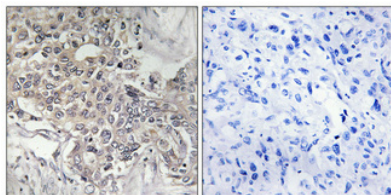
Overview

Product Name	Anti-Cytochrome P450 4Z1 CYP4Z1 Antibody
Reactive Species	Human
Description	Boster Bio Anti-Cytochrome P450 4Z1 CYP4Z1 Antibody catalog # A13386-1. Tested in ELISA, IF, IHC applications. This antibody reacts with Human.
Application	ELISA, IF, IHC, WB
Clonality	Polyclonal
Formulation	Liquid in PBS containing 50% glycerol, 0.5% stabilizing protein and 0.02% sodium azide. This antibody is supplied in a stabilized formulation. Compatibility with conjugation reactions depends on the chemistry of the conjugation method used. For conjugation methods that are not compatible with the stabilizing components present in this formulation, a carrier-free antibody format is required.
Storage Instructions	Store at -20°C for one year. For short term storage and frequent use, store at 4°C for up to one month. Avoid repeated freeze-thaw cycles.
Host	Rabbit
Uniprot ID	Q86W10

Technical Details

Immunogen	The antiserum was produced against synthesized peptide derived from human Cytochrome P450 4Z1. AA range:71-120
Isotype	IgG
Form	Liquid
Concentration	1 mg/ml
Purification	The antibody was affinity-purified from rabbit antiserum by affinity-chromatography using epitope-specific immunogen.
Suggested Dilutions	WB 1:500-2000 IHC 1:100-1:300 IF 1:200-1:1000 ELISA 1:20000

Anti-Cytochrome P450 4Z1 CYP4Z1 Antibody (A13386-1) Images



Immunohistochemistry validation of CYP4Z1 using Anti-Cytochrome P450 4Z1 CYP4Z1 Antibody (A13386-1). Immunohistochemical analysis of paraffin-embedded human lung cancer. Antibody was diluted at 1:100 (4°C)

Submit a product review to [Biocompare.com](https://www.biocompare.com)

Submit a review of this product to [Biocompare.com](https://www.biocompare.com) to receive a \$20 Amazon.com giftcard! Your reviews help your fellow scientists make the right decisions. Thank you for your contribution.



Anti-Cytochrome P450 4Z1 CYP4Z1 Antibody

For Research Use Only. Not for use in diagnostic procedures.