

Anti-Cadherin-20 CDH20 Antibody

Catalog Number: A13390

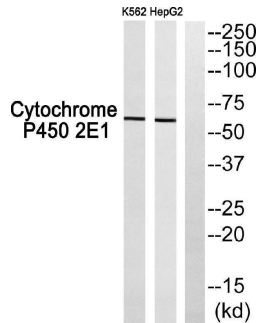
Overview

| | |
|----------------------|---|
| Product Name | Anti-Cadherin-20 CDH20 Antibody |
| Reactive Species | Human, Mouse, Rat |
| Description | Boster Bio Anti-Cadherin-20 CDH20 Antibody (Catalog# A13390). Tested in IHC, ICC, IF, ELISA applications. This antibody reacts with Human, Mouse, Rat. |
| Application | ELISA, IF, IHC, ICC |
| Clonality | Polyclonal |
| Formulation | PBS containing 50% glycerol, 0.5% stabilizing protein and 0.02% sodium azide. This antibody is supplied in a stabilized formulation. Compatibility with conjugation reactions depends on the chemistry of the conjugation method used. For conjugation methods that are not compatible with the stabilizing components present in this formulation, a carrier-free antibody format is required. |
| Storage Instructions | Store at -20°C for one year. For short-term storage and frequent use, store at 4°C for up to one month. Avoid repeated freeze-thaw cycles. |
| Host | Rabbit |
| Uniprot ID | Q9HBT6 |

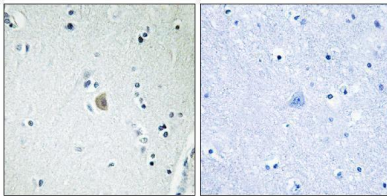
Technical Details

| | |
|---------------------|--|
| Immunogen | A peptide derived from human CDH20. Immunogen sequence location: 111-160 |
| Isotype | Rabbit IgG |
| Form | Liquid |
| Concentration | 0.5-1mg/ml, actual concentration vary by lot. Use suggested dilution ratio to decide dilution procedure. |
| Purification | The antibody was purified from rabbit antiserum by affinity-chromatography using immunogen. |
| Suggested Dilutions | IHC 1:100 - 1:300. ICC/IF 1:200 - 1:1000. ELISA: 1:10000. Not yet tested in other applications. |

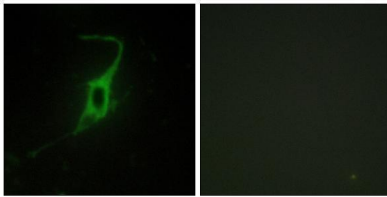
Anti-Cadherin-20 CDH20 Antibody (A13390) Images



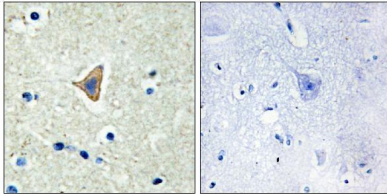
Western blot analysis of CDH20 Antibody. The lane on the right is blocked with the CDH20 peptide.



Immunohistochemistry analysis of paraffin-embedded human brain, using CDH20 Antibody. The lane on the right is blocked with the CDH20 peptide.



Immunofluorescence analysis of NIH/3T3 cells, using CDH20 Antibody. The picture on the right is blocked with the synthesized peptide.



Immunohistochemistry analysis of paraffin-embedded human brain tissue, using CDH20 Antibody. The picture on the right is blocked with the synthesized peptide.

Submit a product review to [Biocompare.com](https://www.biocompare.com)

Submit a review of this product to [Biocompare.com](https://www.biocompare.com) to receive a \$20 Amazon.com giftcard! Your reviews help your fellow scientists make the right decisions. Thank you for your contribution.



Anti-Cadherin-20 CDH20 Antibody

For Research Use Only. Not for use in diagnostic procedures.