

Anti-CDH20 Antibody (N-term)

Catalog Number: A13390-2

About CDH20

This gene is a type II classical cadherin from the cadherin superfamily and one of three cadherin 7-like genes located in a cluster on chromosome 18. The encoded membrane protein is a calcium dependent cell-cell adhesion glycoprotein comprised of five extracellular cadherin repeats, a transmembrane region and a highly conserved cytoplasmic tail. Type II (atypical) cadherins are defined based on their lack of a HAV cell adhesion recognition sequence specific to type I cadherins. Since disturbance of intracellular adhesion is a prerequisite for invasion and metastasis of tumor cells, cadherins are considered prime candidates for tumor suppressor genes.

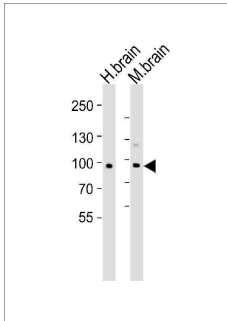
Overview

Product Name	Anti-CDH20 Antibody (N-term)
Reactive Species	Human
Description	Boster Bio Anti-CDH20 Antibody (N-term) (Catalog # A13390-2). Tested in WB, Flow Cytometry, IHC-P application(s). This antibody reacts with Human.
Application	Flow Cytometry, IHC-P, WB
Clonality	Polyclonal
Formulation	Purified polyclonal antibody supplied in PBS with 0.09% (W/V) sodium azide.
Storage Instructions	Maintain refrigerated at 2-8°C for up to 2 weeks. For long-term storage, store at -20°C in small aliquots to prevent freeze-thaw cycles.
Host	Rabbit
Uniprot ID	Q9HBT6

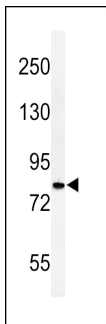
Technical Details

Immunogen	This CDH20 antibody is generated from rabbits immunized with a KLH conjugated synthetic peptide between 111-140 amino acids from the N-terminal region of human CDH20.
Predicted Reactive Species	Mouse, Rat
Isotype	Rabbit IgG
Purification	This antibody is purified through a protein A column, followed by peptide affinity purification.
Suggested Dilutions	WB: 1:1000 IHC-P: 1:50-1:100 FC: 1:10-1:50

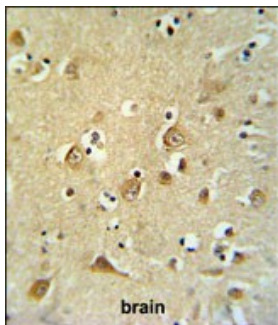
Anti-CDH20 Antibody (N-term) (A13390-2) Images



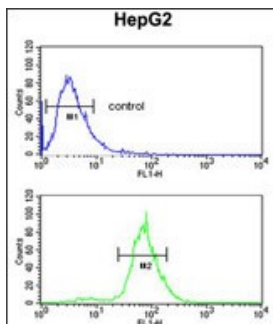
Western blot analysis of lysates from human brain and mouse brain tissue lysate (from left to right), using CDH20 Antibody (N-term). A13390-2 was diluted at 1:1000 at each lane. A goat anti-rabbit IgG H&L (HRP) at 1:5000 dilution was used as the secondary antibody. Lysates at 35ug per lane.



Western blot analysis of CDH20 Antibody (N-term) in HepG2 cell line lysates (35ug/lane). CDH20 (arrow) was detected using the purified Pab.



CDH20 Antibody (N-term) IHC analysis in formalin fixed and paraffin embedded brain tissue followed by peroxidase conjugation of the secondary antibody and DAB staining. This data demonstrates the use of the CDH20 Antibody (N-term) for immunohistochemistry. Clinical relevance has not been evaluated.



CDH20 Antibody (N-term) flow cytometric analysis of HepG2 cells (bottom histogram) compared to a negative control cell (top histogram). FITC-conjugated goat-anti-rabbit secondary antibodies were used for the analysis.

Submit a product review to [Biocompare.com](https://www.biocompare.com)

Submit a review of this product to [Biocompare.com](https://www.biocompare.com) to receive a \$20 Amazon.com giftcard! Your reviews help your fellow scientists make the right decisions. Thank you for your contribution.



Anti-CDH20 Antibody (N-term)

For Research Use Only. Not for use in diagnostic procedures.