

Anti-Checkpoint protein HUS1B Hus1B Antibody

Catalog Number: A13393

About HUS1B

The protein encoded by the Hus1B gene is most closely related to HUS1, a component of a cell cycle checkpoint protein complex involved in cell cycle arrest in response to DNA damage. This protein can interact with the checkpoint protein RAD1 but not with RAD9. Over expression of this protein has been shown to induce cell death, which suggests a related but distinct role of this protein, as compared to HUS1. Hus1B is expressed strongly in testis, less in spleen, thymus, prostate, colon and leukocytes. Anti-HUSB1 Antibody is useful for researchers interested in DNA damage and repair.

Overview

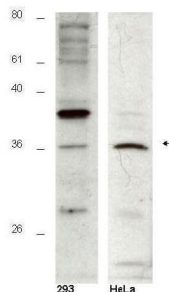
Product Name	Anti-Checkpoint protein HUS1B Hus1B Antibody
Reactive Species	Human
Description	Boster Bio Anti-Checkpoint protein HUS1B Hus1B Antibody (Catalog # A13393). Tested in ELISA, WB applications. This antibody reacts with Human.
Application	ELISA, IP, WB
Clonality	Polyclonal
Formulation	0.02 M Potassium Phosphate, 0.15 M Sodium Chloride, pH 7.2, 0.01% (w/v) Sodium Azide
Storage Instructions	Store vial at -20°C prior to opening. Aliquot contents and freeze at -20°C or below for extended storage. Avoid cycles of freezing and thawing. Centrifuge product if not completely clear after standing at room temperature. This product is stable for several weeks at 4°C as an undiluted liquid. Dilute only prior to immediate use. Expiration date is one (1) year from date of opening. (Ship on dry ice.)
Host	Rabbit
Uniprot ID	Q8NHY5

Technical Details

Immunogen	This affinity purified antibody was prepared from whole rabbit serum produced by repeated immunizations with a synthetic peptide corresponding to an internal region near amino acids 100-125 of human Hus1B protein.
Predicted Reactive Species	Canine, Chicken, Chimpanzee
Isotype	IgG
Form	Liquid (sterile filtered)
Concentration	1.75 mg/mL by UV absorbance at 280 nm

Purification	This affinity-purified antibody is directed against human Hus1B protein. The product was affinity purified from monospecific antiserum by immunoaffinity purification. A BLAST analysis indicates 100% homology of the immunizing sequence with Hus1B protein from human. Partial reactivity with mouse Hus1B is not likely based on low (~64%, 9/14) sequence homology. Reactivity against homologues from other sources is not known.
Suggested Dilutions	ELISA: 1:20,000 - 1:100,000 IP: 1:100 WB: 1:500 - 1:5,000 Anti-HUS1B antibody has been tested for use in ELISA and western blot. Specific conditions for reactivity should be optimized by the end user. Expect a band approximately 38 kDa in size corresponding to Hus1B protein by western blotting in the appropriate cell lysate or extract.

Anti-Checkpoint protein HUS1B Hus1B Antibody (A13393) Images



Western blot using Boster's affinity purified anti-Hus1B antibody shows detection of a 36kDa band [arrow] corresponding to Hus1B in a HeLa cell lysate. The staining pattern in 293 cells is less clear, showing a predominant band at 39 kDa. Personal Communication, A-Lien Lu-Chang, U. Maryland, Baltimore, MD.

1 Publications Citing This Product

1. PubMed ID: 10.3390/genes10100768, Investigation of the Possible Role of RAD9 in Post-Diapaused Embryonic Development of the Brine Shrimp *Artemia sinica*

Visit bosterbio.com/anti-hus1b-antibody-a13393-boster.html to see all 1 publications.

Submit a product review to Biocompare.com

Submit a review of this product to Biocompare.com to receive a \$20 Amazon.com giftcard! Your reviews help your fellow scientists make the right decisions. Thank you for your contribution.



Anti-Checkpoint protein HUS1B Hus1B Antibody

For Research Use Only. Not for use in diagnostic procedures.