

Anti-SLAIN1 Antibody

Catalog Number: A13403-1

About SLAIN1

SLAIN1 is a novel stem cell protein that was identified by transcriptional profiling of mouse and human embryonic stem cells (ESCs) and is expressed at the stem cell and epiblast stages. Unlike its more widely expressed homolog SLAIN2, SLAIN1 was found to be expressed in the epiblast, nervous system, tailbud and somites of the developing mouse embryo later experiments suggested that SLAIN1 may play a role in the development of the nervous system as well as in the morphogenesis of several embryonic structures.

Overview

Product Name	Anti-SLAIN1 Antibody
Reactive Species	Human, Mouse, Rat
Description	Boster Bio Anti-SLAIN1 Antibody (Catalog # A13403-1). Tested in ELISA, WB, IF applications. This antibody reacts with Human, Mouse, Rat.
Application	ELISA, IF, WB
Clonality	Polyclonal
Formulation	SLAIN1 Antibody is supplied in PBS containing 0.02% sodium azide.
Storage Instructions	SLAIN1 antibody can be stored at 4°C for three months and -20°C, stable for up to one year. Avoid repeated freeze-thaw cycles. Antibodies should not be exposed to prolonged high temperatures.
Host	Rabbit
Uniprot ID	Q8ND83

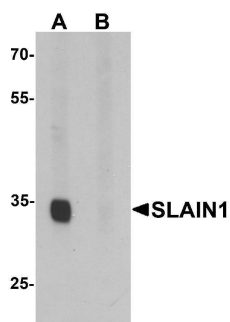
Technical Details

Immunogen	SLAIN1 antibody was raised against an 15 amino acid synthetic peptide near the carboxy terminus of human SLAIN1. The immunogen is located within the last 50 amino acids of SLAIN1.
Predicted Reactive Species	Mouse
Cross Reactivity	At least three isoforms of SLAIN1 are known to exist; this antibody will detect all three. SLAIN1 antibody is predicted not to cross-react with SLAIN2.
Isotype	IgG
Form	Liquid
Concentration	1 mg/mL
Purification	SLAIN1 Antibody is affinity chromatography purified via peptide column.

Suggested Dilutions

SLAIN1 antibody can be used for detection of SLAIN1 by Western blot at 1 ug/mL. Antibody can also be used for immunofluorescence starting at 2.5 ug/mL. For immunofluorescence start at 20 ug/mL. Antibody validated: Western Blot in human samples and Immunofluorescence in human samples. All other applications and species not yet tested. Optimal dilutions for each application should be determined by the researcher.

Anti-SLAIN1 Antibody (A13403-1) Images



Western blot analysis of SLAIN1 in A549 cell lysate with SLAIN1 antibody at 1 ug/mL in (A) the absence and (B) the presence of blocking peptide.



Immunofluorescence of SLAIN1 in A549 cells with SLAIN1 antibody at 2.5 ug/mL.

Submit a product review to Biocompare.com

Submit a review of this product to Biocompare.com to receive a \$20 Amazon.com giftcard! Your reviews help your fellow scientists make the right decisions. Thank you for your contribution.



Anti-SLAIN1 Antibody

For Research Use Only. Not for use in diagnostic procedures.