

Anti-SLAIN1 Antibody Picoband®

Catalog Number: A13403-2

About SLAIN1

SLAIN1 is a novel stem cell protein that was identified by transcriptional profiling of mouse and human embryonic stem cells (ESCs) and is expressed at the stem cell and epiblast stages. Unlike its more widely expressed homolog SLAIN2, SLAIN1 was found to be expressed in the epiblast, nervous system, tailbud and somites of the developing mouse embryo later experiments suggested that SLAIN1 may play a role in the development of the nervous system as well as in the morphogenesis of several embryonic structures.

Overview

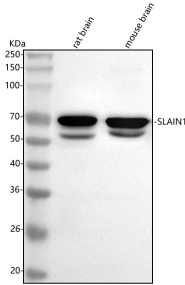
| | |
|----------------------|--|
| Product Name | Anti-SLAIN1 Antibody Picoband® |
| Reactive Species | Human, Mouse, Rat |
| Description | Boster Bio Anti-SLAIN1 Antibody Picoband® catalog # A13403-2. Tested in ELISA, WB, Flow Cytometry applications. This antibody reacts with Human, Mouse, Rat. The brand Picoband indicates this is a premium antibody that guarantees superior quality, high affinity, and strong signals with minimal background in Western blot applications. Only our best-performing antibodies are designated as Picoband, ensuring unmatched performance. |
| Application | ELISA, Flow Cytometry, WB |
| Clonality | Polyclonal |
| Formulation | Each vial contains 4 mg Trehalose, 0.9 mg NaCl, 0.2 mg Na ₂ HPO ₄ . |
| Storage Instructions | At -20°C for one year from date of receipt. After reconstitution, at 4°C for one month. It can also be aliquotted and stored frozen at -20°C for six months. Avoid repeated freezing and thawing. |
| Host | Rabbit |
| Uniprot ID | Q8ND83 |

Technical Details

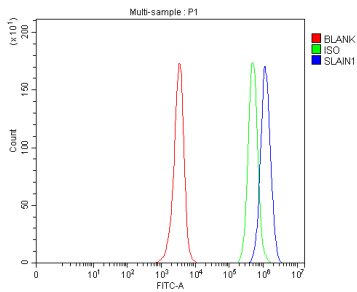
| | |
|-------------------------------|---|
| Immunogen | E.coli-derived human SLAIN1 recombinant protein (Position: E200-Y568). Human SLAIN1 shares 90.1% amino acid (aa) sequence identity with mouse SLAIN1. |
| Recommended Detection Systems | Boster recommends Enhanced Chemiluminescent Kit with anti-Rabbit IgG (EK1002) for Western blot. |
| Cross Reactivity | No cross reactivity with other proteins. |
| Isotype | IgG |
| Form | Lyophilized |
| Concentration | Adding 0.2 ml of distilled water will yield a concentration of 500 µg/ml. |

| | |
|---------------------|--|
| Purification | Immunogen affinity purified. |
| Suggested Dilutions | Western blot, 0.25-0.5 ug/ml, Mouse, Rat Flow Cytometry (Fixed), 1-3 ug/1x10 ⁶ cells, Human ELISA, 0.1-0.5 ug/ml, - |

Anti-SLAIN1 Antibody Picoband® (A13403-2) Images



Western blot analysis of SLAIN1 using anti-SLAIN1 antibody (A13403-2). Electrophoresis was performed on a 5-20% SDS-PAGE gel at 70V (Stacking gel) / 90V (Resolving gel) for 2-3 hours. The sample well of each lane was loaded with 30 ug of sample under reducing conditions. Lane 1: rat brain tissue lysates, Lane 2: mouse brain tissue lysates. After electrophoresis, proteins were transferred to a nitrocellulose membrane at 150 mA for 50-90 minutes. Blocked the membrane with 5% non-fat milk/TBS for 1.5 hour at RT. The membrane was incubated with rabbit anti-SLAIN1 antigen affinity purified polyclonal antibody (Catalog # A13403-2) at 0.5 ug/mL overnight at 4°C, then washed with TBS-0.1%Tween 3 times with 5 minutes each and probed with a goat anti-rabbit IgG-HRP secondary antibody at a dilution of 1:5000 for 1.5 hour at RT. The signal is developed using an Enhanced Chemiluminescent detection (ECL) kit (Catalog # EK1002) with Tanon 5200 system. A specific band was detected for SLAIN1 at approximately 70 kDa. The expected band size for SLAIN1 is at 61 kDa.



Flow Cytometry analysis of JK cells using anti-SLAIN1 antibody (A13403-2). Overlay histogram showing JK cells stained with A13403-2 (Blue line). To facilitate intracellular staining, cells were fixed with 4% paraformaldehyde and permeabilized with permeabilization buffer. The cells were blocked with 10% normal goat serum. And then incubated with rabbit anti-SLAIN1 Antibody (A13403-2, 1 ug/1x10⁶ cells) for 30 min at 20°C. DyLight®488 conjugated goat anti-rabbit IgG (BA1127, 5-10 ug/1x10⁶ cells) was used as secondary antibody for 30 minutes at 20°C. Isotype control antibody (Green line) was rabbit IgG (1 ug/1x10⁶) used under the same conditions. Unlabelled sample (Red line) was also used as a control.

Submit a product review to [Biocompare.com](https://www.biocompare.com)

Submit a review of this product to [Biocompare.com](https://www.biocompare.com) to receive a \$20 Amazon.com giftcard! Your reviews help your fellow scientists make the right decisions. Thank you for your contribution.



Anti-SLAIN1 Antibody

For Research Use Only. Not for use in diagnostic procedures.