

## Anti-Probable ribonuclease ZC3H12C ZC3H12C Antibody

Catalog Number: A13406

### About ZC3H12C

ZC3H12C, also known as MCPIP3, is a member of a family of novel CCCH-zinc finger proteins that includes ZC3H12A, a protein that is thought to be involved in macrophage activation, host immunity and inflammatory diseases. Similar to ZC3H12A, ZC3H12C expression in macrophages is highly increased after treatment with lipopolysaccharide (LPS), suggesting it also may play a role in host immunity and inflammatory response.

### Overview

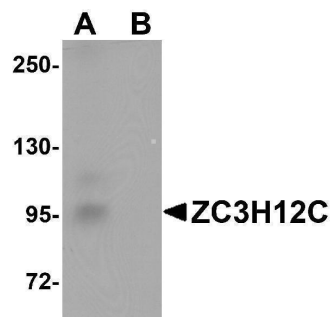
Product Name	Anti-Probable ribonuclease ZC3H12C ZC3H12C Antibody
Reactive Species	Human, Mouse, Rat
Description	Boster Bio Anti-Probable ribonuclease ZC3H12C ZC3H12C Antibody (Catalog # A13406). Tested in ELISA, WB, IHC-P, IF applications. This antibody reacts with Human, Mouse, Rat.
Application	ELISA, IF, IHC-P, WB
Clonality	Polyclonal
Formulation	ZC3H12C Antibody is supplied in PBS containing 0.02% sodium azide.
Storage Instructions	ZC3H12C antibody can be stored at 4°C for three months and -20°C, stable for up to one year. Avoid repeated freeze-thaw cycles. Antibodies should not be exposed to prolonged high temperatures.
Host	Rabbit
Uniprot ID	Q9C0D7

### Technical Details

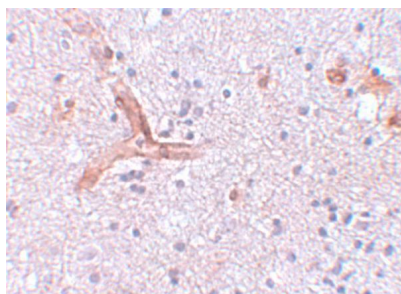
Immunogen	ZC3H12C antibody was raised against a 17 amino acid synthetic peptide near the amino terminus of human ZC3H12C. The immunogen is located within the first 50 amino acids of ZC3H12C.
Predicted Reactive Species	Mouse
Isotype	IgG
Form	Liquid
Concentration	1 mg/mL
Purification	ZC3H12C Antibody is affinity chromatography purified via peptide column.
Suggested Dilutions	ZC3H12C antibody can be used for detection of ZC3H12C by Western blot at 1 ug/mL. Antibody can also be used for immunohistochemistry starting at 5 ug/mL. For immunofluorescence start at 20 ug/mL.

Antibody validated: Western Blot in rat samples; Immunohistochemistry in human samples and Immunofluorescence in human samples. All other applications and species not yet tested. Optimal dilutions for each application should be determined by the researcher.

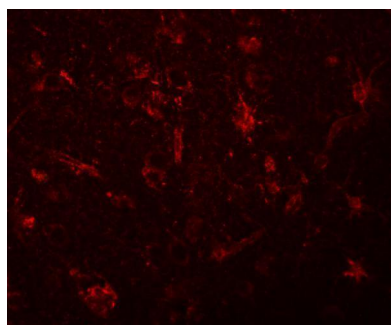
## Anti-Probable ribonuclease ZC3H12C ZC3H12C Antibody (A13406) Images



Western blot analysis of ZC3H12C in rat brain tissue lysate with ZC3H12C antibody at 1 ug/mL in (A) the absence and (B) the presence of blocking peptide.



Immunohistochemistry of ZC3H12C in human brain tissue with ZC3H12C antibody at 5 ug/mL.



Immunofluorescence of ZC3H12C in human brain tissue with ZC3H12C antibody at 20 ug/mL.

**Submit a product review to Biocompare.com**

Submit a review of this product to Biocompare.com to receive a \$20 Amazon.com giftcard! Your reviews help your fellow scientists make the right decisions. Thank you for your contribution.



Anti-Probable ribonuclease ZC3H12C ZC3H12C Antibody

For Research Use Only. Not for use in diagnostic procedures.