

Anti-F-box/LRR-repeat protein 12 FBXL12 Antibody

Catalog Number: A13439

Overview

Product Name	Anti-F-box/LRR-repeat protein 12 FBXL12 Antibody
Reactive Species	Human, Mouse
Description	Boster Bio Anti-F-box/LRR-repeat protein 12 FBXL12 Antibody catalog # A13439. Tested in WB applications. This antibody reacts with Human, Mouse.
Application	WB
Clonality	Polyclonal
Formulation	Rabbit IgG, 1mg/ml in PBS with 0.02% sodium azide, 50% glycerol, pH7.2
Storage Instructions	Store at -20°C for one year. For short term storage and frequent use, store at 4°C for up to one month. Avoid repeated freeze-thaw cycles.
Host	Rabbit
Uniprot ID	Q9NXX8

Technical Details

Form	Liquid
Purification	The antibody was affinity-purified from rabbit antiserum by affinity-chromatography using epitope-specific immunogen and the purity is > 95% (by SDS-PAGE).
Suggested Dilutions	<p>Dilute the sample so that the expected range of concentrations fall within the detection range of this kit.</p> <p>If the expected range of concentration is unknown, a pilot test should be conducted to decide the optimal dilution ratio for your samples.</p> <p>Some PubMed article(s) citing the expression level of this target are as follows: Boster Bio's internal QC testing used WB 1:500 - 1:2000</p> <p>For protocols, please visit https://www.bosterbio.com/protocol-and-troubleshooting/</p>

Anti-F-box/LRR-repeat protein 12 FBXL12 Antibody (A13439) Images

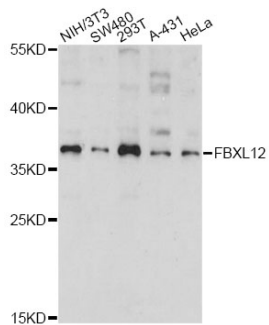


Figure 1. Western blotting validation for Anti-F-box/LRR-repeat protein 12 FBXL12 Antibody A13439

Western blot analysis of extracts of various cell lines

Submit a product review to Biocompare.com

Submit a review of this product to Biocompare.com to receive a \$20 Amazon.com giftcard! Your reviews help your fellow scientists make the right decisions. Thank you for your contribution.



Anti-F-box/LRR-repeat protein 12 FBXL12 Antibody