

Anti-SUSD3 Antibody

Catalog Number: A13447

About SUSD3

Little is known of the function of the sushi domain containing 3 protein (SUSD3), but its expression has been reported in estrogen receptor-alpha (ERalpha)-positive breast tumors with decreased expression reported in aggressive malignant tumors (1,2). Recently, SUSD3 has been found to promote estrogen-dependent cell proliferation and may regulate cell-cell and cell-substrate interactions and migration in breast cancer (3). Furthermore, elevated SUSD3 mRNA levels were observed in aromatase inhibitor-responsive breast tumors, suggesting that it may also serve as a novel predictor of response to endocrine therapy and a potential therapeutic target (3).

Overview

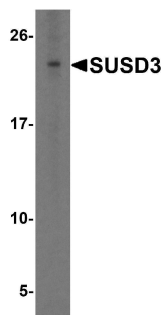
Product Name	Anti-SUSD3 Antibody
Reactive Species	Human, Mouse
Description	Boster Bio Anti-SUSD3 Antibody (Catalog # A13447). Tested in ELISA, WB, ICC applications. This antibody reacts with Human, Mouse.
Application	ELISA, ICC, WB
Clonality	Polyclonal
Formulation	SUSD3 Antibody is supplied in PBS containing 0.02% sodium azide.
Storage Instructions	SUSD3 antibody can be stored at 4°C for three months and -20°C, stable for up to one year.
Host	Rabbit
Uniprot ID	Q96L08

Technical Details

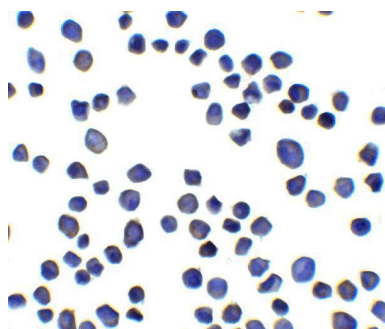
Immunogen	SUSD3 antibody was raised against a 16 amino acid peptide from near the center of human SUSD3. The immunogen is located within amino acids 120 - 170 of SUSD3.
Predicted Reactive Species	Bovine
Cross Reactivity	SUSD3 antibody is human and mouse reactive. Multiple isoforms of SUSD3 are known to exist.
Isotype	IgG
Form	Liquid
Concentration	1 mg/mL
Purification	SUSD3 Antibody is affinity chromatography purified via peptide column.
Suggested Dilutions	SUSD3 antibody can be used for the detection of SUSD3 by Western blot at 1 - 2 ug/mL. Antibody

can also be used for immunocytochemistry starting at 5 ug/mL.
Antibody validated: Western Blot in human samples and Immunocytochemistry in mouse samples.
All other applications and species not yet tested. Optimal dilutions for each application should be determined by the researcher.

Anti-SUSD3 Antibody (A13447) Images



Western blot analysis of SUSD3 in HeLa cell lysate with SUSD3 antibody at 1 ug/ml.



Immunocytochemistry of SUSD3 in 3T3 cells with SUSD3 antibody at 5 ug/ml.

Submit a product review to [Biocompare.com](https://www.biocompare.com)

Submit a review of this product to [Biocompare.com](https://www.biocompare.com) to receive a \$20 Amazon.com giftcard! Your reviews help your fellow scientists make the right decisions. Thank you for your contribution.



Anti-SUSD3 Antibody

For Research Use Only. Not for use in diagnostic procedures.