

Anti-OCC-1 Antibody

Catalog Number: A13456

About C12ORF75

OCC-1 (Overexpressed in colon carcinoma-1) was initially identified as a novel human cDNA overexpressed in a colon carcinoma cell line. Elevated levels of OCC-1 mRNA were observed in three of eight colon carcinomas, suggesting that OCC-1 may be a hallmark of only a subset of colon carcinomas. It is highly expressed in skeletal muscle, kidney, placenta, and pancreas tissues, with low to no expression in heart, brain, lung and liver tissues. At least two different OCC-1 mRNA species are known to exist.

Overview

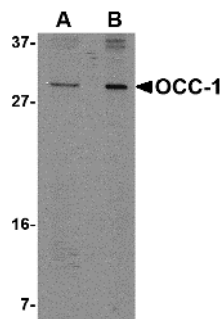
Product Name	Anti-OCC-1 Antibody
Reactive Species	Human
Description	Boster Bio Anti-OCC-1 Antibody (Catalog # A13456). Tested in ELISA, WB, IHC-P applications. This antibody reacts with Human.
Application	ELISA, IHC-P, WB
Clonality	Polyclonal
Formulation	OCC-1 Antibody is supplied in PBS containing 0.02% sodium azide.
Storage Instructions	OCC-1 antibody can be stored at 4°C for three months and -20°C, stable for up to one year. Avoid repeated freeze-thaw cycles. Antibodies should not be exposed to prolonged high temperatures.
Host	Rabbit
Uniprot ID	Q8TAD7

Technical Details

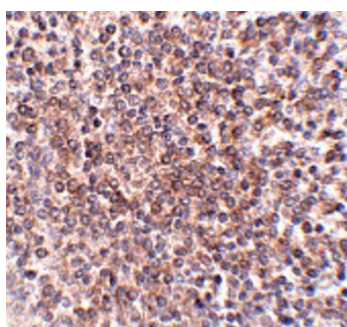
Immunogen	OCC-1 antibody was raised against a 7 amino acid synthetic peptide near the carboxy terminus of human OCC-1. The immunogen is located within the last 50 amino acids of OCC-1.
Predicted Reactive Species	Chicken
Isotype	IgG
Form	Liquid
Concentration	1 mg/mL
Purification	OCC-1 Antibody is affinity chromatography purified via peptide column.
Suggested Dilutions	OCC-1 antibody can be used for detection of OCC-1 by Western blot at 2 - 4 ug/mL. In vitro transcription and translation of the OCC-1 cDNA yields polypeptides less than 9 kDa. Despite this, OCC-1 from cell lines is detected at ~28 kDa in SDS-PAGE. Antibody can also be used for

immunohistochemistry starting at 2.5 ug/mL.
Antibody validated: Western Blot in human samples and Immunohistochemistry in human samples.
All other applications and species not yet tested. Optimal dilutions for each application should be determined by the researcher.

Anti-OCC-1 Antibody (A13456) Images



Western blot analysis of OCC-1 in 293 cell lysate with OCC-1 antibody at (A) 2 ug/mL and (B) 4 ug/mL.



Immunohistochemistry of OCC-1 in human spleen tissue with OCC-1 antibody at 2.5 ug/mL.

Submit a product review to [Biocompare.com](https://www.biocompare.com)

Submit a review of this product to [Biocompare.com](https://www.biocompare.com) to receive a \$20 Amazon.com giftcard! Your reviews help your fellow scientists make the right decisions. Thank you for your contribution.



Anti-OCC-1 Antibody

For Research Use Only. Not for use in diagnostic procedures.