

Anti-NAT6/FUS2/NAA80 Antibody Picoband®

Catalog Number: A13474-1-carrier-free

About NAA80

This gene encodes a member of the N-acetyltransferase family. N-acetyltransferases modify proteins by transferring acetyl groups from acetyl CoA to the N-termini of protein substrates. The encoded protein is a cytoplasmic N-acetyltransferase with a substrate specificity for proteins with an N-terminal methionine. This gene is located in the tumor suppressor gene region on chromosome 3p21.3 and the encoded protein may play a role in cancer. Alternatively spliced transcript variants encoding multiple isoforms have been observed. This gene overlaps and is on the same strand as hyaluronoglucosaminidase 3, and some transcripts of each gene share a portion of the first exon.

Overview

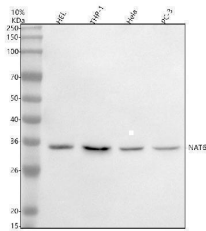
Product Name	Anti-NAT6/FUS2/NAA80 Antibody Picoband®
Reactive Species	Human, Mouse
Description	Boster Bio Anti-NAT6/FUS2/NAA80 Antibody Picoband® catalog # A13474-1. Tested in WB, Flow Cytometry, ELISA applications. This antibody reacts with Human, Mouse. The brand Picoband indicates this is a premium antibody that guarantees superior quality, high affinity, and strong signals with minimal background in Western blot applications. Only our best-performing antibodies are designated as Picoband, ensuring unmatched performance.
Application	ELISA, Flow Cytometry, WB
Clonality	Polyclonal
Formulation	Each vial contains 4 mg Trehalose, 0.9 mg NaCl, 0.2 mg Na ₂ HPO ₄ .
Storage Instructions	At -20°C for one year from date of receipt. After reconstitution, at 4°C for one month. It can also be aliquotted and stored frozen at -20°C for six months. Avoid repeated freezing and thawing.
Host	Rabbit
Uniprot ID	Q93015

Technical Details

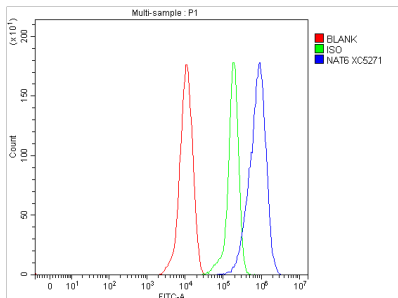
Immunogen	E.coli-derived human NAT6/FUS2/NAA80 recombinant protein (Position: M1-I286). Human NAT6/FUS2/NAA80 shares 69.4% amino acid (aa) sequence identity with mouse NAT6/FUS2/NAA80.
Form	Lyophilized
Concentration	Adding 0.2 ml of distilled water will yield a concentration of 500 ug/ml.
Purification	Immunogen affinity purified.
Suggested Dilutions	Western blot, 0.25-0.5 ug/ml, Human, Mouse Flow Cytometry (Fixed), 1-3 ug/1x10 ⁶ cells, Human

	ELISA, 0.1-0.5 ug/ml
--	----------------------

Anti-NAT6/FUS2/NAA80 Antibody Picoband® (A13474-1-carrier-free) Images



Western blot analysis of NAT6/FUS2/NAA80 using anti-NAT6/FUS2/NAA80 antibody (A13474-1). Electrophoresis was performed on a 10% SDS-PAGE gel at 80V (Stacking gel) / 120V (Resolving gel) for 2 hours. The sample well of each lane was loaded with 30 ug of sample under reducing conditions. Lane 1: human HEL whole cell lysates, Lane 2: human THP-1 whole cell lysates, Lane 3: human Hela whole cell lysates, Lane 4: human PC-3 whole cell lysates. After electrophoresis, proteins were transferred to a nitrocellulose membrane at 150 mA for 50-90 minutes. Blocked the membrane with 5% non-fat milk/TBS for 1.5 hour at RT. The membrane was incubated with rabbit anti-NAT6/FUS2/NAA80 antigen affinity purified polyclonal antibody (A13474-1) at 0.5 ug/mL overnight at 4°C, then washed with TBS-0.1%Tween 3 times with 5 minutes each and probed with a goat anti-rabbit IgG-HRP secondary antibody at a dilution of 1:5000 for 1.5 hour at RT. The signal is developed using an ECL Plus Western Blotting Substrate (Catalog # AR1196-200) with Tanon 5200 system. A specific band was detected for NAT6/FUS2/NAA80 at approximately 35 kDa. The expected band size for NAT6/FUS2/NAA80 is at 31 kDa.



Flow Cytometry analysis of THP-1 cells using anti-NAT6/FUS2/NAA80 antibody (A13474-1). Overlay histogram showing THP-1 cells stained with A13474-1 (Blue line). To facilitate intracellular staining, cells were fixed with 4% paraformaldehyde and permeabilized with permeabilization buffer. The cells were blocked with 10% normal goat serum. And then incubated with rabbit anti-NAT6/FUS2/NAA80 Antibody (A13474-1, 1 ug/1x10⁶ cells) for 30 min at 20°C. DyLight®488 conjugated goat anti-rabbit IgG (BA1127, 5-10 ug/1x10⁶ cells) was used as secondary antibody for 30 minutes at 20°C. Isotype control antibody (Green line) was rabbit IgG (1 ug/1x10⁶) used under the same conditions. Unlabelled sample without incubation with primary antibody and secondary antibody (Red line) was used as a blank control.

Submit a product review to [Biocompare.com](https://www.biocompare.com)

Submit a review of this product to [Biocompare.com](https://www.biocompare.com) to receive a \$20 Amazon.com giftcard! Your reviews help your fellow scientists make the right decisions. Thank you for your contribution.



Anti-NAT6/FUS2/NAA80 Antibody

For Research Use Only. Not for use in diagnostic procedures.