

## Anti-MRP-L13 Antibody

Catalog Number: A13508-1

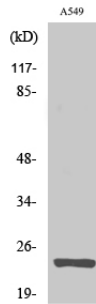
### Overview

Product Name	Anti-MRP-L13 Antibody
Reactive Species	Human, Mouse, Rat
Description	Boster Bio Anti-MRP-L13 Antibody catalog # A13508-1. Tested in WB, IHC, IF, ELISA applications. This antibody reacts with Human, Mouse, Rat.
Application	ELISA, IF, IHC, WB
Clonality	Polyclonal
Formulation	Liquid in PBS containing 50% glycerol, 0.5% stabilizing protein and 0.02% sodium azide. This antibody is supplied in a stabilized formulation. Compatibility with conjugation reactions depends on the chemistry of the conjugation method used. For conjugation methods that are not compatible with the stabilizing components present in this formulation, a carrier-free antibody format is required.
Storage Instructions	Store at -20°C for one year. For short term storage and frequent use, store at 4°C for up to one month. Avoid repeated freeze-thaw cycles.
Host	Rabbit
Uniprot ID	Q9BYD1

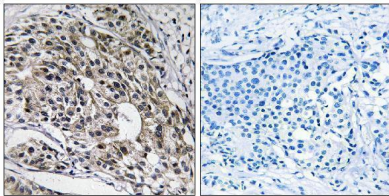
### Technical Details

Immunogen	The antiserum was produced against synthesized peptide derived from human MRPL13. AA range:121-170
Isotype	IgG
Form	Liquid
Concentration	1 mg/ml
Purification	Immunogen affinity purified
Suggested Dilutions	WB 1:500-1:2000 IHC 1:100-1:300 ELISA 1:40000 IF 1:50-200

## Anti-MRP-L13 Antibody (A13508-1) Images



Western Blot analysis of various cells using MRP-L13 Polyclonal Antibody diluted at 1:1000



Immunohistochemistry analysis of paraffin-embedded human breast carcinoma tissue, using MRPL13 Antibody. The picture on the right is blocked with the synthesized peptide.

## 1 Publications Citing This Product

1. PubMed ID: 10.1096/fj.202100819RRR, Dysfunctional mitochondrial translation and combined oxidative phosphorylation deficiency in a mouse model of hepatoencephalopathy due to Gfm1 mutations

Visit [bosterbio.com/anti-mrp-l13-antibody-a13508-1-boster.html](https://bosterbio.com/anti-mrp-l13-antibody-a13508-1-boster.html) to see all 1 publications.

## Submit a product review to Biocompare.com

Submit a review of this product to Biocompare.com to receive a \$20 Amazon.com giftcard! Your reviews help your fellow scientists make the right decisions. Thank you for your contribution.



Anti-MRP-L13 Antibody

For Research Use Only. Not for use in diagnostic procedures.