

Anti-TYW1 Antibody

Catalog Number: A13510

About TYW1

TYW1, also known as TYW1A, RSAFD1 or YPL207W, is a 732 amino acid protein containing one flavodoxin-like domain that participates in the wybutosine-tRNA (Phe) biosynthesis pathway. Wybutosine (yW) is a hypermodified guanosine at the 3-prime position adjacent to the anticodon of phenylalanine tRNA that stabilizes codon-anticodon interactions during decoding on the ribosome. TYW1 is involved in a multistep enzymatic reaction that stabilizes codon-anticodon base-pairing during the ribosomal decoding process, thereby ensuring correct translation. TYW1 binds to one 4Fe-4S cluster and is located on human chromosome 7. Defects in some of the genes on chromosome 7 have been linked to Osteogenesis imperfecta, Williams-Beuren syndrome, Lissencephaly, Citrullinemia and Shwachman-Diamond syndrome, suggesting that TYW1 may play a role in these conditions

Overview

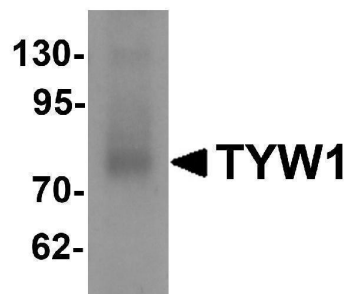
Product Name	Anti-TYW1 Antibody
Reactive Species	Human, Rat
Description	Boster Bio Anti-TYW1 Antibody (Catalog # A13510). Tested in ELISA, WB, IHC-P applications. This antibody reacts with Human, Rat.
Application	ELISA, IHC-P, WB
Clonality	Polyclonal
Formulation	TYW1 Antibody is supplied in PBS containing 0.02% sodium azide.
Storage Instructions	TYW1 antibody can be stored at 4 °C, stable for one year. Avoid repeated freeze-thaw cycles. Antibodies should not be exposed to prolonged high temperatures.
Host	Rabbit
Uniprot ID	Q9NV66

Technical Details

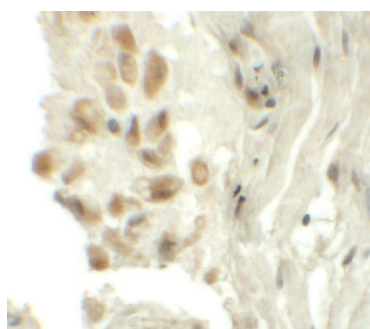
Immunogen	TYW1 antibody was raised against a 19 amino acid synthetic peptide near the carboxy terminus of human TYW1. The immunogen is located within amino acids 520 - 570 of TYW1.
Predicted Reactive Species	Mouse
Cross Reactivity	TYW1 antibody is predicted to not cross-react with other TYW protein family members. At least three isoforms of TYW1 are known to exist; this antibody will only detect the two larger isoforms.
Isotype	IgG
Form	Liquid

Concentration	1 mg/mL
Purification	TYW1 Antibody is affinity chromatography purified via peptide column.
Suggested Dilutions	TYW1 antibody can be used for detection of TYW1 by Western blot at 1 ug/mL. Antibody can also be used for immunohistochemistry starting at 5 ug/mL. Antibody validated: Western Blot in human samples and Immunohistochemistry in human samples. All other applications and species not yet tested. Optimal dilutions for each application should be determined by the researcher.

Anti-TYW1 Antibody (A13510) Images



Western blot analysis of TYW1 in human lung tissue lysate with TYW1 antibody at 1 ug/mL.



Immunohistochemistry of TYW1 in human lung tissue with TYW1 antibody at 5 ug/mL.

Submit a product review to [Biocompare.com](https://www.biocompare.com)

Submit a review of this product to [Biocompare.com](https://www.biocompare.com) to receive a \$20 Amazon.com giftcard! Your reviews help your fellow scientists make the right decisions. Thank you for your contribution.



Anti-TYW1 Antibody

For Research Use Only. Not for use in diagnostic procedures.