

Anti-Annexin A10/ANXA10 Antibody Picoband®

Catalog Number: A13560-1

About ANXA10

ANXA10(Annexin A10) is a member of the annexin family of calcium-dependent phospholipid-binding proteins. By FISH, Morgan et al.(1999) mapped the ANXA10 gene to chromosome 4q33. Morgan et al.(1999) suggested that the ablation or depletion of principal calcium-binding sites in annexins A9 and A10, respectively, may dispose them to function in distinct tissue environments where calcium sensitivity is not a major functional determinant.

Overview

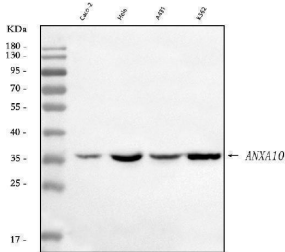
Product Name	Anti-Annexin A10/ANXA10 Antibody Picoband®
Reactive Species	Human
Description	Boster Bio Anti-Annexin A10/ANXA10 Antibody Picoband® catalog # A13560-1. Tested in ELISA, Flow Cytometry, IF, IHC, WB applications. This antibody reacts with Human. The brand Picoband indicates this is a premium antibody that guarantees superior quality, high affinity, and strong signals with minimal background in Western blot applications. Only our best-performing antibodies are designated as Picoband, ensuring unmatched performance.
Application	ELISA, Flow Cytometry, IF, IHC, WB
Clonality	Polyclonal
Formulation	Each vial contains 4 mg Trehalose, 0.9 mg NaCl, 0.2 mg Na ₂ HPO ₄ .
Storage Instructions	At -20°C for one year from date of receipt. After reconstitution, at 4°C for one month. It can also be aliquotted and stored frozen at -20°C for six months. Avoid repeated freezing and thawing.
Host	Rabbit
Uniprot ID	Q9UJ72

Technical Details

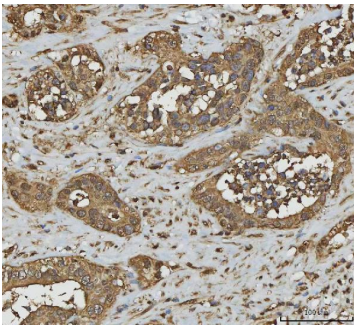
Immunogen	E.coli-derived human Annexin A10/ANXA10 recombinant protein (Position: N49-Y324).
Recommended Detection Systems	Boster recommends Enhanced Chemiluminescent Kit with anti-Rabbit IgG (EK1002) for Western blot, and HRP Conjugated anti-Rabbit IgG Super Vision Assay Kit (SV0002-1) for IHC(P).
Cross Reactivity	No cross-reactivity with other proteins
Isotype	Rabbit IgG
Form	Lyophilized
Concentration	Adding 0.2 ml of distilled water will yield a concentration of 500 ug/ml.

Purification	Immunogen affinity purified.
Suggested Dilutions	Western blot, 0.25-0.5 ug/ml/ml, Human Immunohistochemistry(Paraffin-embedded Section), 2-5 ug/ml/ml, Human Immunofluorescence, 5 ug/ml, Human Flow Cytometry (Fixed), 1-3 ug/ml/1x10 ⁶ cells, Human ELISA, 0.1-0.5 ug/ml/ml, Human

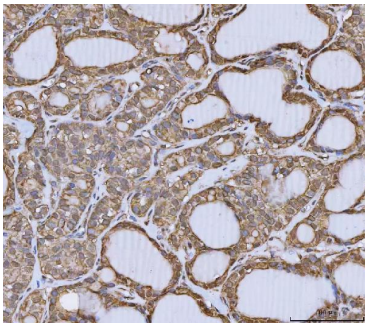
Anti-Annexin A10/ANXA10 Antibody Picoband® (A13560-1) Images



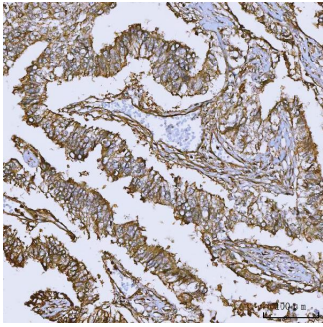
Western blot analysis of Annexin A10/ANXA10 using anti-Annexin A10/ANXA10 antibody (A13560-1). Electrophoresis was performed on a 5-20% SDS-PAGE gel at 70V (Stacking gel) / 90V (Resolving gel) for 2-3 hours. The sample well of each lane was loaded with 30 ug of sample under reducing conditions. Lane 1: human CACO-2 whole cell lysates, Lane 2: human Hela whole cell lysates, Lane 3: human A431 whole cell lysates, Lane 4: human K562 whole cell lysates. After electrophoresis, proteins were transferred to a nitrocellulose membrane at 150 mA for 50-90 minutes. Blocked the membrane with 5% non-fat milk/TBS for 1.5 hour at RT. The membrane was incubated with rabbit anti-Annexin A10/ANXA10 antigen affinity purified polyclonal antibody (Catalog # A13560-1) at 0.5 ug/mL overnight at 4°C, then washed with TBS-0.1%Tween 3 times with 5 minutes each and probed with a goat anti-rabbit IgG-HRP secondary antibody at a dilution of 1:5000 for 1.5 hour at RT. The signal is developed using an Enhanced Chemiluminescent detection (ECL) kit (Catalog # EK1002) with Tanon 5200 system. A specific band was detected for Annexin A10/ANXA10 at approximately 36 kDa. The expected band size for Annexin A10/ANXA10 is at 37 kDa.



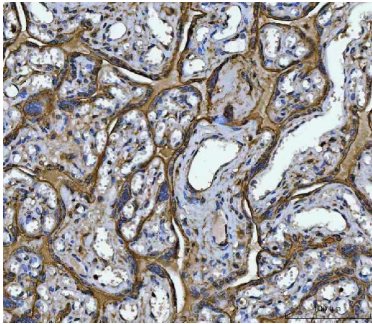
IHC analysis of Annexin A10/ANXA10 using anti-Annexin A10/ANXA10 antibody (A13560-1). Annexin A10/ANXA10 was detected in a paraffin-embedded section of human thyroid cancer tissue. Heat mediated antigen retrieval was performed in EDTA buffer (pH 8.0, epitope retrieval solution). The tissue section was blocked with 10% goat serum. The tissue section was then incubated with 2 ug/ml rabbit anti-Annexin A10/ANXA10 Antibody (A13560-1) overnight at 4°C. Peroxidase Conjugated Goat Anti-rabbit IgG was used as secondary antibody and incubated for 30 minutes at 37°C. The tissue section was developed using HRP Conjugated Rabbit IgG Super Vision Assay Kit (Catalog # SV0002) with DAB as the chromogen.



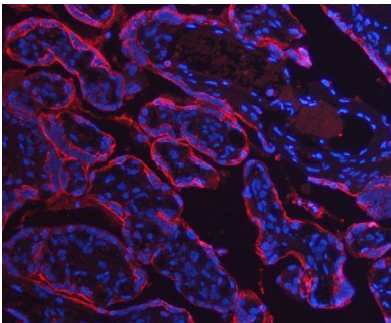
IHC analysis of Annexin A10/ANXA10 using anti-Annexin



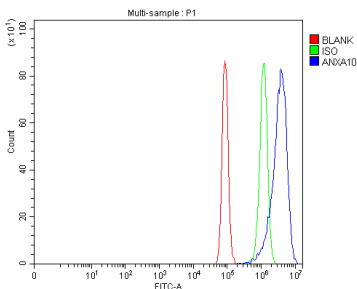
A10/ANXA10 antibody (A13560-1). Annexin A10/ANXA10 was detected in a paraffin-embedded section of human lung adenocarcinoma tissue. Heat mediated antigen retrieval was performed in EDTA buffer (pH 8.0, epitope retrieval solution). The tissue section was blocked with 10% goat serum. The tissue section was then incubated with 2 ug/ml rabbit anti-Annexin A10/ANXA10 Antibody (A13560-1) overnight at 4°C. Peroxidase Conjugated Goat Anti-rabbit IgG was used as secondary antibody and incubated for 30 minutes at 37°C. The tissue section was developed using HRP Conjugated Rabbit IgG Super Vision Assay Kit (Catalog # SV0002) with DAB as the chromogen.



IHC analysis of Annexin A10/ANXA10 using anti-Annexin A10/ANXA10 antibody (A13560-1). Annexin A10/ANXA10 was detected in a paraffin-embedded section of human placenta tissue. Heat mediated antigen retrieval was performed in EDTA buffer (pH 8.0, epitope retrieval solution). The tissue section was blocked with 10% goat serum. The tissue section was then incubated with 2 ug/ml rabbit anti-Annexin A10/ANXA10 Antibody (A13560-1) overnight at 4°C. Peroxidase Conjugated Goat Anti-rabbit IgG was used as secondary antibody and incubated for 30 minutes at 37°C. The tissue section was developed using HRP Conjugated Rabbit IgG Super Vision Assay Kit (Catalog # SV0002) with DAB as the chromogen.



IF analysis of Annexin A10/ANXA10 using anti-Annexin A10/ANXA10 antibody (A13560-1). Annexin A10/ANXA10 was detected in a paraffin-embedded section of human placenta tissue. Heat mediated antigen retrieval was performed in EDTA buffer (pH 8.0, epitope retrieval solution). The tissue section was blocked with 10% goat serum. The tissue section was then incubated with 5 ug/mL rabbit anti-Annexin A10/ANXA10 Antibody (A13560-1) overnight at 4°C. Cy3 Conjugated Goat Anti-Rabbit IgG (BA1032) was used as secondary antibody at 1:500 dilution and incubated for 30 minutes at 37°C. The section was counterstained with DAPI. Visualize using a fluorescence microscope and filter sets appropriate for the label used.



Flow Cytometry analysis of PC-3 cells using anti-Annexin A10/ANXA10 antibody (A13560-1). Overlay histogram showing PC-3 cells stained with A13560-1 (Blue line). To facilitate intracellular staining, cells were fixed with 4% paraformaldehyde and permeabilized with permeabilization buffer. The cells were blocked with 10% normal goat serum. And then incubated with rabbit anti-Annexin A10/ANXA10 Antibody (A13560-1, 1 ug/1x10⁶ cells) for 30 min at 20°C. DyLight®488 conjugated goat anti-rabbit IgG (BA1127, 5-10 ug/1x10⁶ cells) was used as secondary antibody for 30 minutes at 20°C. Isotype control antibody (Green line) was rabbit IgG (1 ug/1x10⁶) used under the same conditions. Unlabelled sample without incubation with primary antibody and secondary antibody (Red line) was used as a blank control.

Submit a product review to Biocompare.com

Submit a review of this product to Biocompare.com to receive a \$20 Amazon.com giftcard! Your reviews help your fellow scientists make the right decisions. Thank you for your contribution.



Anti-Annexin A10/ANXA10 Antibody

For Research Use Only. Not for use in diagnostic procedures.