

Anti-NAT11 NAA40 Antibody

Catalog Number: A13562

About NAA40

N-terminal acetylation is one of the most common protein modifications in eukaryotes, occurring on approximately 57% and 84% on yeast and human proteins respectively. There are several N-terminal acetylating enzyme complexes (NatA - NatE). Unlike the other complexes, NatD is composed of a single protein, NAT11, and has recently been described to acetylate the Serine N-termini of histones H2A and H4 in yeast. The role these modifications play is unknown; yeast that do not express NAT11 grow at normal rates and have no observable phenotypes. The role of the human homolog is likewise unknown.

Overview

Product Name	Anti-NAT11 NAA40 Antibody
Reactive Species	Human, Mouse
Description	Boster Bio Anti-NAT11 NAA40 Antibody (Catalog # A13562). Tested in ELISA, WB, IHC-P, IF applications. This antibody reacts with Human, Mouse.
Application	ELISA, IF, IHC-P, WB
Clonality	Polyclonal
Formulation	NAT11 Antibody is supplied in PBS containing 0.02% sodium azide.
Storage Instructions	NAT11 antibody can be stored at 4°C for three months and -20°C, stable for up to one year. Avoid repeated freeze-thaw cycles. Antibodies should not be exposed to prolonged high temperatures.
Host	Rabbit
Uniprot ID	Q86UY6

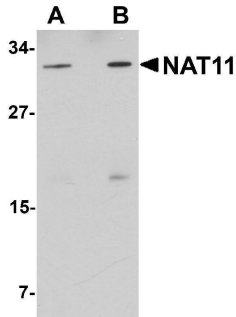
Technical Details

Immunogen	NAT11 antibody was raised against a 15 amino acid synthetic peptide near the carboxy terminus of human NAT11. The immunogen is located within the last 50 amino acids of NAT11.
Predicted Reactive Species	Mouse
Isotype	IgG
Form	Liquid
Concentration	1 mg/mL
Purification	NAT11 Antibody is affinity chromatography purified via peptide column.
Suggested Dilutions	NAT11 antibody can be used for detection of NAT11 by Western blot at 1 - 2 ug/mL. Antibody can also be used for immunohistochemistry starting at 5 ug/mL. For immunofluorescence start at 20

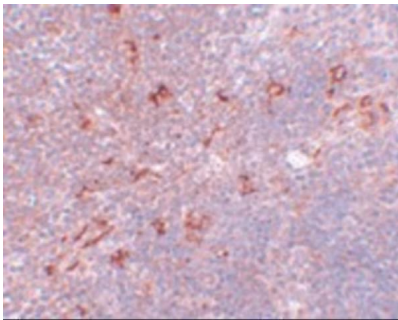
ug/mL.

Antibody validated: Western Blot in human samples; Immunohistochemistry in mouse samples and Immunofluorescence in mouse samples. All other applications and species not yet tested. Optimal dilutions for each application should be determined by the researcher.

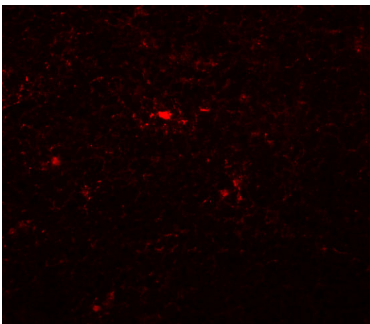
Anti-NAT11 NAA40 Antibody (A13562) Images



Western blot analysis of NAT11 in human thymus tissue lysate with NAT11 antibody at (A) 1 and (B) 2 ug/mL.



Immunohistochemistry of NAT11 in mouse thymus tissue with NAT11 antibody at 5 ug/mL.



Immunofluorescence of NAT11 in mouse thymus tissue with NAT11 antibody at 20 ug/mL.

Submit a product review to [Biocompare.com](https://www.biocompare.com)

Submit a review of this product to [Biocompare.com](https://www.biocompare.com) to receive a \$20 Amazon.com giftcard! Your reviews help your fellow scientists make the right decisions. Thank you for your contribution.



Anti-NAT11 NAA40 Antibody

For Research Use Only. Not for use in diagnostic procedures.