

## Anti-EMR4 ADGRE4P Antibody

Catalog Number: A13581

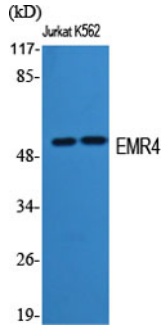
### Overview

Product Name	Anti-EMR4 ADGRE4P Antibody
Reactive Species	Human, Monkey
Description	Boster Bio Anti-EMR4 ADGRE4P Antibody catalog # A13581. Tested in WB, IF, ELISA applications. This antibody reacts with Human, Monkey.
Application	ELISA, IF, WB
Clonality	Polyclonal
Formulation	Liquid in PBS containing 50% glycerol, 0.5% stabilizing protein and 0.02% sodium azide. This antibody is supplied in a stabilized formulation. Compatibility with conjugation reactions depends on the chemistry of the conjugation method used. For conjugation methods that are not compatible with the stabilizing components present in this formulation, a carrier-free antibody format is required.
Storage Instructions	Store at -20°C for one year. For short term storage and frequent use, store at 4°C for up to one month. Avoid repeated freeze-thaw cycles.
Host	Rabbit
Uniprot ID	Q86SQ3

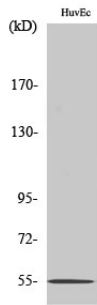
### Technical Details

Immunogen	The antiserum was produced against synthesized peptide derived from human EMR4P. AA range:101-150
Isotype	IgG
Form	Liquid
Concentration	1 mg/ml
Purification	Immunogen affinity purified
Suggested Dilutions	WB 1:500-1:2000 IF 1:200-1:1000 ELISA 1:20000

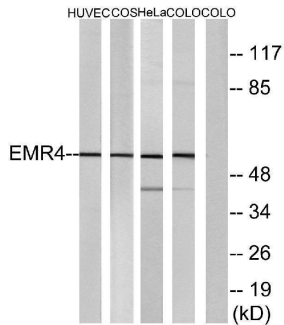
## Anti-EMR4 ADGRE4P Antibody (A13581) Images



Western Blot analysis of various cells using EMR4 Polyclonal Antibody



Western Blot analysis of COLO205 cells using EMR4 Polyclonal Antibody



Western blot analysis of lysates from HUVEC cells, COS7 cells, HeLa cells, and COLO205 cells, using EMR4 Antibody. The lane on the right is blocked with the synthesized peptide.

### Submit a product review to Biocompare.com

Submit a review of this product to Biocompare.com to receive a \$20 Amazon.com giftcard! Your reviews help your fellow scientists make the right decisions. Thank you for your contribution.



Anti-EMR4 ADGRE4P Antibody

For Research Use Only. Not for use in diagnostic procedures.