

## Anti-WDR18 Antibody

Catalog Number: A13595

### About WDR18

WD repeat domain 18 (WDR18) is a member of the WD repeat protein family, which is involved in a variety of cellular processes, including cell cycle progression, signal transduction, apoptosis, and gene regulation. WD repeats are minimally conserved regions of approximately 40 amino acids that commonly form a tertiary propeller structure. WDR18 is a 432 amino acid protein that contains six WD repeats and is encoded by a gene located on human chromosome 19. WDR18 may play a role during development. The complex PELP1-TEX10-WDR18 is required for the maturation and nucleolar release of the large ribosomal subunit.

### Overview

Product Name	Anti-WDR18 Antibody
Reactive Species	Human, Mouse, Rat
Description	Boster Bio Anti-WDR18 Antibody (Catalog # A13595). Tested in ELISA, WB, IHC-P applications. This antibody reacts with Human, Mouse, Rat.
Application	ELISA, IHC-P, WB
Clonality	Polyclonal
Formulation	WDR18 Antibody is supplied in PBS containing 0.02% sodium azide.
Storage Instructions	WDR18 antibody can be stored at 4°C for three months and -20°C, stable for up to one year. Avoid repeated freeze-thaw cycles. Antibodies should not be exposed to prolonged high temperatures.
Host	Rabbit
Uniprot ID	Q9BV38

### Technical Details

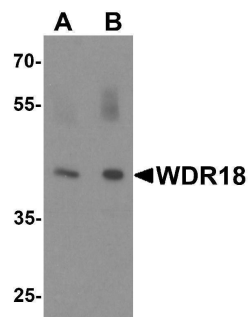
Immunogen	WDR18 antibody was raised against a 17 amino acid synthetic peptide near the carboxy terminus of human WDR18. The immunogen is located within the last 50 amino acids of WDR18.
Predicted Reactive Species	Bovine
Cross Reactivity	WDR18 antibody is predicted to not cross-react with other WDR family members.
Isotype	IgG
Form	Liquid
Concentration	1 mg/mL
Purification	WDR18 Antibody is affinity chromatography purified via peptide column.

Suggested Dilutions

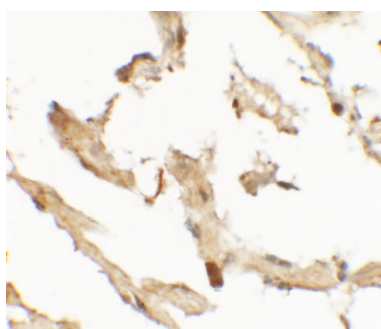
WDR18 antibody can be used for detection of WDR18 by Western blot at 0.5 - 1 ug/mL. Antibody can also be used for immunohistochemistry starting at 2.5 ug/mL. For immunofluorescence start at 2.5 ug/mL.

Antibody validated: Western Blot in rat samples and Immunohistochemistry in human samples. All other applications and species not yet tested. Optimal dilutions for each application should be determined by the researcher.

## Anti-WDR18 Antibody (A13595) Images



Western blot analysis of WDR18 in rat lung tissue lysate with WDR18 antibody at (A) 1 and (B) 2 ug/mL.



Immunohistochemistry of WDR18 in human lung tissue with WDR18 antibody at 2.5 ug/mL.

### Submit a product review to [Biocompare.com](https://www.biocompare.com)

Submit a review of this product to [Biocompare.com](https://www.biocompare.com) to receive a \$20 Amazon.com giftcard! Your reviews help your fellow scientists make the right decisions. Thank you for your contribution.



### Anti-WDR18 Antibody

For Research Use Only. Not for use in diagnostic procedures.