

Anti-Junctophilin-4 JPH4 Antibody

Catalog Number: A13608-1

About JPH4

Junctional complexes between the plasma membrane (PM) and endoplasmic/sarcoplasmic reticulum (ER/SR) are a common feature of all excitable cell types and mediate cross talk between cell surface and intracellular ion channels. Junctophilins (JPs) are important components of the junctional complexes. JPs are composed of a carboxy-terminal hydrophobic segment spanning the ER/SR membrane and a remaining cytoplasmic domain that shows specific affinity for the PM. Four JPs have been identified as tissue-specific subtypes derived from different genes: JPH1 is expressed in skeletal muscle, JPH2 is detected throughout all muscle cell types, and JPH3 and JPH4 are predominantly expressed in the brain. In the CNS, both JPH3 and JPH4 are expressed throughout neural sites and contribute to the subsurface cistern formation in neurons. Mice lacking both JPH3 and JPH4 subtypes exhibit serious symptoms such as impaired learning and memory and are accompanied by abnormal nervous functions.

Overview

Product Name	Anti-Junctophilin-4 JPH4 Antibody
Reactive Species	Human, Mouse, Rat
Description	Boster Bio Anti-Junctophilin-4 JPH4 Antibody (Catalog # A13608-1). Tested in ELISA, WB, IHC-P, IF applications. This antibody reacts with Human, Mouse, Rat.
Application	ELISA, IF, IHC-P, WB
Clonality	Polyclonal
Formulation	JPH4 Antibody is supplied in PBS containing 0.02% sodium azide.
Storage Instructions	JPH4 antibody can be stored at 4°C for three months and -20°C, stable for up to one year. Avoid repeated freeze-thaw cycles. Antibodies should not be exposed to prolonged high temperatures.
Host	Rabbit
Uniprot ID	Q96JJ6

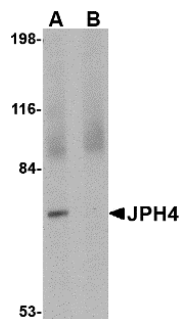
Technical Details

Immunogen	JPH4 antibody was raised against a 16 amino acid synthetic peptide near the carboxy terminus of human JPH4. The immunogen is located within amino acids 530 - 580 of JPH4.
Predicted Reactive Species	Bovine
Isotype	IgG
Form	Liquid
Concentration	1 mg/mL
Purification	JPH4 Antibody is affinity chromatography purified via peptide column.

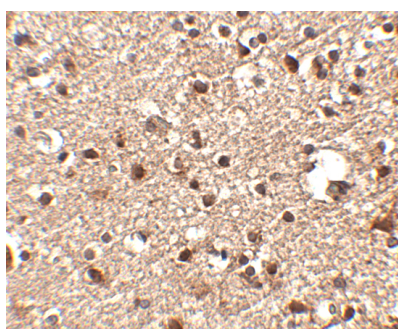
Suggested Dilutions

JPH4 antibody can be used for detection of JPH4 by Western blot at 1 ug/mL. Antibody can also be used for immunohistochemistry starting at 2.5 ug/mL. For immunofluorescence start at 20 ug/mL. Antibody validated: Western Blot in human samples; Immunohistochemistry in human samples and Immunofluorescence in human samples. All other applications and species not yet tested. Optimal dilutions for each application should be determined by the researcher.

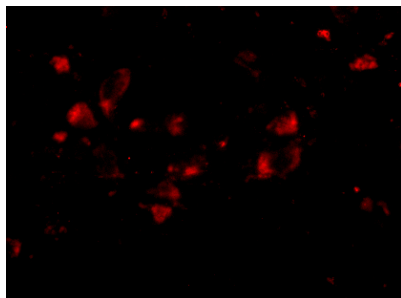
Anti-Junctophilin-4 JPH4 Antibody (A13608-1) Images



Western blot analysis of JPH4 in 293 cell lysate with JPH4 antibody at 1 ug/mL in (A) the absence and (B) the presence of blocking peptide.



Immunohistochemistry of JPH4 in human brain tissue with JPH4 antibody at 2.5 ug/mL.



Immunofluorescence of JPH4 in Human Brain cells with JPH4 antibody at 20 ug/mL.

Submit a product review to Biocompare.com

Submit a review of this product to Biocompare.com to receive a \$20 Amazon.com giftcard! Your reviews help your fellow scientists make the right decisions. Thank you for your contribution.



Anti-Junctophilin-4 JPH4 Antibody

For Research Use Only. Not for use in diagnostic procedures.