

Anti-Caskin-1 CASKIN1 Antibody

Catalog Number: A13631

About CASKIN1

Calcium/calmodulin-dependent serine protein kinase (CASK) is a conserved multi-domain scaffolding protein involved in brain development, synapse formation, and establishment of cell polarity. CASKINs (CASK interacting proteins) interact with CASK and is thought to play a role in CASK function, specifically by coupling CASK to distinct downstream effectors. CASKIN1 is a multidomain protein containing six N-terminal ankyrin repeats, one SH3 domain, and two sterile alpha motif domains followed by a long proline-rich sequence and a short conserved C-terminal domain. CASKIN1 coassembles with CASK on the cytoplasmic tail of neurexin 1, suggesting that CASKIN and CASK coat the cytoplasmic tails of neurexins and other cell-surface proteins.

Overview

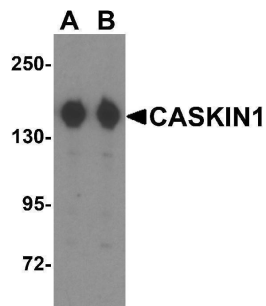
Product Name	Anti-Caskin-1 CASKIN1 Antibody
Reactive Species	Human
Description	Boster Bio Anti-Caskin-1 CASKIN1 Antibody (Catalog # A13631). Tested in ELISA, WB applications. This antibody reacts with Human.
Application	ELISA, WB
Clonality	Polyclonal
Formulation	CASKIN1 Antibody is supplied in PBS containing 0.02% sodium azide.
Storage Instructions	CASKIN1 antibody can be stored at 4°C for three months and -20°C, stable for up to one year. Avoid repeated freeze-thaw cycles. Antibodies should not be exposed to prolonged high temperatures.
Host	Rabbit
Uniprot ID	Q8WXD9

Technical Details

Immunogen	CASKIN1 antibody was raised against a 17 amino acid synthetic peptide near the center of human CASKIN1. The immunogen is located within amino acids 720 - 770 of CASKIN1.
Predicted Reactive Species	Mouse, Rat
Cross Reactivity	CASKIN1 antibody is predicted to not cross-react with other CASKIN family members.
Isotype	IgG
Form	Liquid
Concentration	1 mg/mL

Purification	CASKIN1 Antibody is affinity chromatography purified via peptide column.
Suggested Dilutions	CASKIN1 antibody can be used for detection of CASKIN1 by Western blot at 1 ug/mL. Antibody validated: Western Blot in human samples. All other applications and species not yet tested. Optimal dilutions for each application should be determined by the researcher.

Anti-Caskin-1 CASKIN1 Antibody (A13631) Images



Western blot analysis of CASKIN1 in HeLa cell lysate with CLAUDIN4 antibody at (A) 0.25 and (B) 0.5 ug/mL.

Submit a product review to Biocompare.com

Submit a review of this product to Biocompare.com to receive a \$20 Amazon.com giftcard! Your reviews help your fellow scientists make the right decisions. Thank you for your contribution.



Anti-Caskin-1 CASKIN1 Antibody

For Research Use Only. Not for use in diagnostic procedures.