

Anti-FCHSD1 Antibody

Catalog Number: A13635

About FCHSD1

The FCH and double SH3 domains protein 1 (FCHSD1, also known as NWK2) and the related protein FCHSD2 were initially identified in silico as distantly related proteins to FNBP1 and FNBP2. Both share the common domain structure consisting of FCH, FBH, two SH3 and C-terminal proline-rich domains. While little is known of the function of FCHSD1, the related protein NWK is an adaptor protein that is thought to regulate Rho activity downstream of Robo receptors, suggesting that FCHSD1 may be involved in synaptic morphology by regulating actin dynamics in presynaptic terminals.

Overview

Product Name	Anti-FCHSD1 Antibody
Reactive Species	Human, Mouse
Description	Boster Bio Anti-FCHSD1 Antibody (Catalog # A13635). Tested in ELISA, WB applications. This antibody reacts with Human, Mouse.
Application	ELISA, WB
Clonality	Polyclonal
Formulation	FCHSD1 Antibody is supplied in PBS containing 0.02% sodium azide.
Storage Instructions	FCHSD1 antibody can be stored at 4°C for three months and -20°C, stable for up to one year. As with all antibodies care should be taken to avoid repeated freeze thaw cycles. Antibodies should not be exposed to prolonged high temperatures.
Host	Chicken
Uniprot ID	Q86WN1

Technical Details

Immunogen	FCHSD1 antibody was raised against a 15 amino acid synthetic peptide near the carboxy terminus of human FCHSD1. The immunogen is located within the last 50 amino acids of FCHSD1.
Cross Reactivity	Multiple isoforms of FCHSD1 are known to exist. FCHSD1 antibody is predicted to not cross-react with FCHSD2
Isotype	IgY
Form	Liquid
Concentration	1 mg/mL
Purification	FCHSD1 Antibody is affinity chromatography purified via peptide column.

Suggested Dilutions

Dilute the sample so that the expected range of concentrations fall within the detection range of this kit.

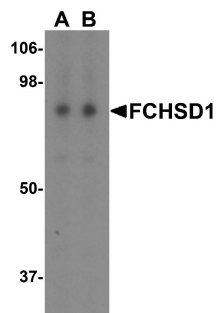
If the expected range of concentration is unknown, a pilot test should be conducted to decide the optimal dilution ratio for your samples.

Some PubMed article(s) citing the expression level of this target are as follows:

Boster Bio's internal QC testing used FCHSD1 antibody can be used for detection of FCHSD1 by Western blot at 0.5 - 1 µg/mL. Antibody validated: Western Blot in human samples. All other applications and species not yet tested.

For protocols, please visit <https://www.bosterbio.com/protocol-and-troubleshooting/>

Anti-FCHSD1 Antibody (A13635) Images



Western blot analysis of FCHSD1 in MCF7 cell lysate with FCHSD1 antibody at (A) 0.5 and (B) 1 µg/mL.

Submit a product review to Biocompare.com

Submit a review of this product to Biocompare.com to receive a \$20 Amazon.com giftcard! Your reviews help your fellow scientists make the right decisions. Thank you for your contribution.



Anti-FCHSD1 Antibody