

Anti-TINP1 NSA2 Antibody

Catalog Number: A13677

About NSA2

TINP1 (TGF-beta inducible nuclear protein 1), also known as NSA2 (Nop seven-associated 2), is a highly conserved nucleolar protein essential for large ribosomal subunit biogenesis. NSA2 is broadly expressed in human tissues and cultured cell lines, and located in the nucleolus of the cell. It is thought to be involved in cell proliferation and cell cycle regulation.

Overview

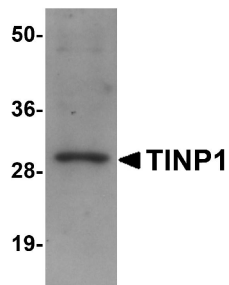
Product Name	Anti-TINP1 NSA2 Antibody
Reactive Species	Human, Mouse, Rat
Description	Boster Bio Anti-TINP1 NSA2 Antibody (Catalog # A13677). Tested in ELISA, WB, IHC-P applications. This antibody reacts with Human, Mouse, Rat.
Application	ELISA, IHC-P, WB
Clonality	Polyclonal
Formulation	TINP1 Antibody is supplied in PBS containing 0.02% sodium azide.
Storage Instructions	TINP1 antibody can be stored at 4°C for three months and -20°C, stable for up to one year. Avoid repeated freeze-thaw cycles. Antibodies should not be exposed to prolonged high temperatures.
Host	Chicken
Uniprot ID	O95478

Technical Details

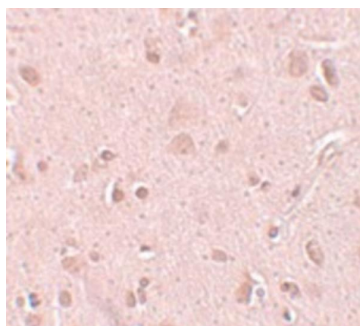
Immunogen	TINP1 antibody was raised against a 13 amino acid synthetic peptide near the carboxy terminus of human TINP1. The immunogen is located within the last 50 amino acids of TINP1.
Predicted Reactive Species	Bovine
Isotype	IgY
Form	Liquid
Concentration	1 mg/mL
Purification	TINP1 Antibody is affinity chromatography purified via peptide column.
Suggested Dilutions	Dilute the sample so that the expected range of concentrations fall within the detection range of this kit. If the expected range of concentration is unknown, a pilot test should be conducted to decide the optimal dilution ratio for your samples.

Some PubMed article(s) citing the expression level of this target are as follows:
Boster Bio's internal QC testing used:
TINP1 antibody can be used for detection of TINP1 by Western blot at 1 - 2 ug/mL. Antibody can also be used for immunohistochemistry starting at 5 ug/mL.
Antibody validated: Western Blot in rat samples and Immunohistochemistry in human samples. All other applications and species not yet tested. Optimal dilutions for each application should be determined by the researcher.

Anti-TINP1 NSA2 Antibody (A13677) Images



Western blot analysis of TINP1 in rat brain tissue lysate with TINP1 antibody at (A) 1 and (B) 2 ug/mL.



Immunohistochemistry of TINP1 in human brain tissue with TINP1 antibody at 5 ug/mL.

Submit a product review to Biocompare.com

Submit a review of this product to Biocompare.com to receive a \$20 Amazon.com giftcard! Your reviews help your fellow scientists make the right decisions. Thank you for your contribution.



Anti-TINP1 NSA2 Antibody