

## Anti-Paralemmin3 PALM3 Antibody

Catalog Number: A13680

### About PALM3

Paralemmin3 is a recently identified protein that associates with the single immunoglobulin IL-1 receptor-related molecule (SIGIRR), a negative regulator of Toll-like receptor-interleukin 1 receptor signaling. Silencing of Paralemmin3 expression by RNAi inhibited the release of inflammatory cytokines in A549 cells after stimulation with lipopolysaccharide (LPS), suggesting Paralemmin3 may function as an adaptor in the LPS-TLR4 signaling pathway.

### Overview

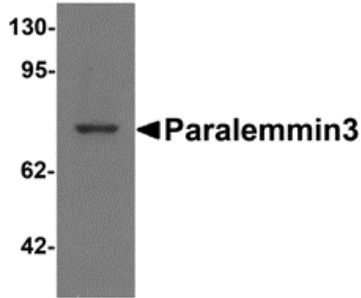
Product Name	Anti-Paralemmin3 PALM3 Antibody
Reactive Species	Human
Description	Boster Bio Anti-Paralemmin3 PALM3 Antibody (Catalog # A13680). Tested in ELISA, WB, ICC, IF applications. This antibody reacts with Human.
Application	ELISA, IF, ICC, WB
Clonality	Polyclonal
Formulation	Paralemmin3 Antibody is supplied in PBS containing 0.02% sodium azide.
Storage Instructions	Paralemmin3 antibody can be stored at 4°C for three months and -20°C, stable for up to one year. Avoid repeated freeze-thaw cycles. Antibodies should not be exposed to prolonged high temperatures.
Host	Rabbit
Uniprot ID	A6NDB9

### Technical Details

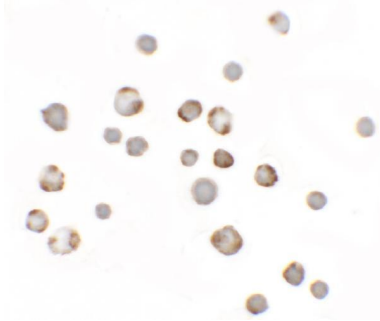
Immunogen	Paralemmin3 antibody was raised against a 19 amino acid synthetic peptide near the amino terminus of human Paralemmin3. The immunogen is located within amino acids 50 - 100 of Paralemmin3.
Predicted Reactive Species	Mouse
Cross Reactivity	At least two isoforms of Paralemmin3 are known to exist; this antibody will only detect the longer isoform
Isotype	IgG
Form	Liquid
Concentration	1 mg/mL

Purification	Paralemmin3 Antibody is affinity chromatography purified via peptide column.
Suggested Dilutions	Paralemmin3 antibody can be used for detection of Paralemmin3 by Western blot at 1 ug/mL. Antibody can also be used for immunocytochemistry starting at 5 ug/mL. For immunofluorescence start at 20 ug/mL. Antibody validated: Western Blot in human samples; Immunocytochemistry in human samples and Immunofluorescence in human samples. All other applications and species not yet tested. Optimal dilutions for each application should be determined by the researcher.

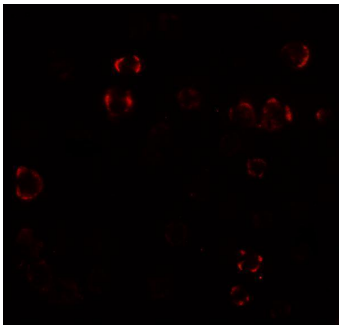
## Anti-Paralemmin3 PALM3 Antibody (A13680) Images



Western blot analysis of Paralemmin3 in MCF7 cell lysate with Paralemmin3 antibody at 1 ug/mL.



Immunocytochemistry of Paralemmin 3 in MCF7 cells with Paralemmin 3 antibody at 5 ug/mL.



Immunofluorescence of Paralemmin 3 in MCF7 cells with Paralemmin 3 antibody at 20 ug/mL.

### Submit a product review to [Biocompare.com](https://www.biocompare.com)

Submit a review of this product to [Biocompare.com](https://www.biocompare.com) to receive a \$20 Amazon.com giftcard! Your reviews help your fellow scientists make the right decisions. Thank you for your contribution.



Anti-Paralemmin3 PALM3 Antibody

For Research Use Only. Not for use in diagnostic procedures.