

Anti-Rkhd1 MEX3D Antibody

Catalog Number: A13697

About MEX3D

Rkhd1, also known as TINO or MEX3D is a member of a novel family of four homologous human MEX3 proteins each containing two heterogeneous nuclear ribonucleoprotein K homology (KH) domains and one carboxy-terminal RING finger module. MEX3 proteins, including Rkhd1, are phosphoproteins that bind RNA through their KH domains and shuttle between the nucleus and the cytoplasm via the CRM1 export pathway. These proteins are a novel family of evolutionarily conserved RNA-binding proteins, differentially recruited to P bodies and potentially involved in post-transcriptional regulatory mechanisms. Rkhd1 binds to the AU-rich element in the 3'-untranslated region of Bcl-2 mRNA and is thought to be a negative regulator of Bcl-2 expression. Rkhd3 and Rkhd4, but not Rkhd1, co-localize with both the hDcp1a decapping factor and Argonaute (Ago) proteins in processing bodies (P bodies), recently characterized as centers of mRNA turnover.

Overview

Product Name	Anti-Rkhd1 MEX3D Antibody
Reactive Species	Human
Description	Boster Bio Anti-Rkhd1 MEX3D Antibody (Catalog # A13697). Tested in ELISA, WB, IHC-P, IF applications. This antibody reacts with Human.
Application	ELISA, IF, IHC-P, WB
Clonality	Polyclonal
Formulation	Rkhd1 Antibody is supplied in PBS containing 0.02% sodium azide.
Storage Instructions	Rkhd1 antibody can be stored at 4°C for three months and -20°C, stable for up to one year. Avoid repeated freeze-thaw cycles. Antibodies should not be exposed to prolonged high temperatures.
Host	Rabbit
Uniprot ID	Q86XN8

Technical Details

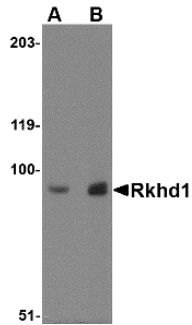
Immunogen	Rkhd1 antibody was raised against a 15 amino acid synthetic peptide from near the center of human Rkhd1. The immunogen is located within amino acids 360 - 410 of Rkhd1.
Predicted Reactive Species	Mouse
Isotype	IgG
Form	Liquid
Concentration	1 mg/mL
Purification	Rkhd1 Antibody is affinity chromatography purified via peptide column.

Suggested Dilutions

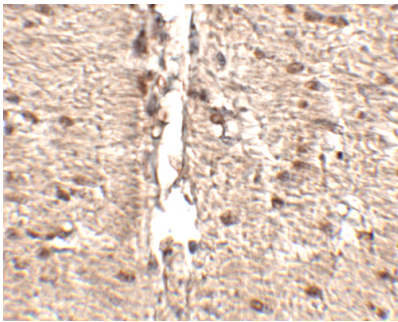
Rkhd1 antibody can be used for detection of Rkhd1 by Western blot at 1 - 2 ug/mL. Antibody can also be used for immunohistochemistry starting at 2.5 ug/mL. For immunofluorescence start at 20 ug/mL.

Antibody validated: Western Blot in human samples; Immunohistochemistry in human samples and Immunofluorescence in human samples. All other applications and species not yet tested. Optimal dilutions for each application should be determined by the researcher.

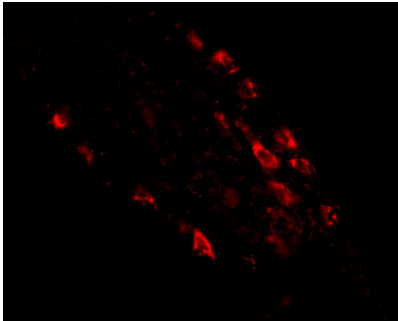
Anti-Rkhd1 MEX3D Antibody (A13697) Images



Western blot analysis of Rkhd1 in MDA-MB-361 cell lysate with Rkhd1 antibody at (A) 1 ug/ml and (B) 2 ug/mL.



Immunohistochemistry of Rkhd1 in human small intestine tissue with Rkhd1 antibody at 2.5 ug/mL.



Immunofluorescence of Rkhd1 in human small intestine tissue with Rkhd1 antibody at 20 ug/mL.

Submit a product review to [Biocompare.com](https://www.biocompare.com)

Submit a review of this product to [Biocompare.com](https://www.biocompare.com) to receive a \$20 Amazon.com giftcard! Your reviews help your fellow scientists make the right decisions. Thank you for your contribution.



Anti-Rkhd1 MEX3D Antibody

For Research Use Only. Not for use in diagnostic procedures.