

Anti-RHBDD2 Antibody

Catalog Number: A13726

About RHBDD2

The Rhomboid family of proteins is made up of several widely conserved polytopic membrane serine proteases that play roles in growth and development. Little is known about the role of RHBDD2. Its overexpression in breast carcinoma appears to be an indicator of poor prognosis and may play a role in breast cancer progression. The related proteins RHBDD1 and RHBDD3 are both involved in the regulation of apoptosis, suggesting that RHBDD2 may also be involved in the modulation of apoptotic activity.

Overview

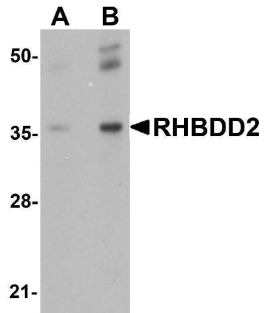
Product Name	Anti-RHBDD2 Antibody
Reactive Species	Human, Mouse, Rat
Description	Boster Bio Anti-RHBDD2 Antibody (Catalog # A13726). Tested in ELISA, WB, IF applications. This antibody reacts with Human, Mouse, Rat.
Application	ELISA, IF, WB
Clonality	Polyclonal
Formulation	RHBDD2 Antibody is supplied in PBS containing 0.02% sodium azide.
Storage Instructions	RHBDD2 antibody can be stored at 4°C for three months and -20°C, stable for up to one year. Avoid repeated freeze-thaw cycles. Antibodies should not be exposed to prolonged high temperatures.
Host	Rabbit
Uniprot ID	Q6NTF9

Technical Details

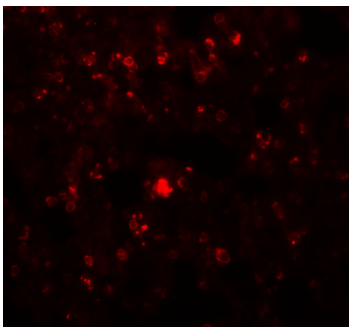
Immunogen	RHBDD2 antibody was raised against an 18 amino acid synthetic peptide from near the center of human RHBDD2. The immunogen is located within amino acids 220 - 270 of RHBDD2.
Predicted Reactive Species	Mouse
Isotype	IgG
Form	Liquid
Concentration	1 mg/mL
Purification	RHBDD2 Antibody is affinity chromatography purified via peptide column.
Suggested Dilutions	RHBDD2 antibody can be used for detection of RHBDD2 by Western blot at 1 - 2 ug/mL. For immunofluorescence start at 20 ug/mL. Antibody validated: Western Blot in rat samples and Immunofluorescence in rat samples. All other

applications and species not yet tested. Optimal dilutions for each application should be determined by the researcher.

Anti-RHBDD2 Antibody (A13726) Images



Western blot analysis of RHBDD2 in rat lung tissue lysate with RHBDD2 antibody at (A) 1 and (B) 2 ug/mL.



Immunofluorescence of RHBDD2 in Rat Lung cells with RHBDD2 antibody at 20 ug/mL.

Submit a product review to [Biocompare.com](https://www.biocompare.com)

Submit a review of this product to [Biocompare.com](https://www.biocompare.com) to receive a \$20 Amazon.com giftcard! Your reviews help your fellow scientists make the right decisions. Thank you for your contribution.



Anti-RHBDD2 Antibody

For Research Use Only. Not for use in diagnostic procedures.