

Anti-NTPase NTPCR Antibody

Catalog Number: A13743-2

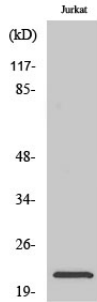
Overview

Product Name	Anti-NTPase NTPCR Antibody
Reactive Species	Human, Mouse
Description	Boster Bio Anti-NTPase NTPCR Antibody catalog # A13743-2. Tested in ELISA, IHC, WB applications. This antibody reacts with Human.
Application	ELISA, IF, IHC, WB
Clonality	Polyclonal
Formulation	Liquid in PBS containing 50% glycerol, 0.5% stabilizing protein and 0.02% sodium azide. This antibody is supplied in a stabilized formulation. Compatibility with conjugation reactions depends on the chemistry of the conjugation method used. For conjugation methods that are not compatible with the stabilizing components present in this formulation, a carrier-free antibody format is required.
Storage Instructions	Store at -20°C for one year. For short term storage and frequent use, store at 4°C for up to one month. Avoid repeated freeze-thaw cycles.
Host	Rabbit
Uniprot ID	Q9BSD7

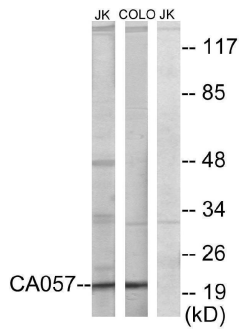
Technical Details

Immunogen	The antiserum was produced against synthesized peptide derived from human C1orf57. AA range:141-190
Isotype	IgG
Form	Liquid
Concentration	1 mg/ml
Purification	The antibody was affinity-purified from rabbit antiserum by affinity-chromatography using epitope-specific immunogen.
Suggested Dilutions	WB 1:500-1:2000 IHC 1:100-1:300 ELISA 1:40000 IF 1:50-200

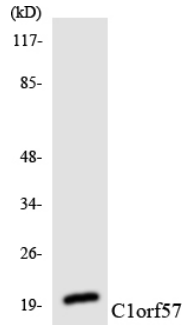
Anti-NTPase NTPCR Antibody (A13743-2) Images



Western Blot analysis of various cells using NTPase Polyclonal Antibody



Western blot analysis of lysates from Jurkat and COLO205 cells, using CA057 Antibody. The lane on the right is blocked with the synthesized peptide.



Western blot analysis of the lysates from HUVEC cells using C1orf57 antibody.

Submit a product review to Biocompare.com

Submit a review of this product to Biocompare.com to receive a \$20 Amazon.com giftcard! Your reviews help your fellow scientists make the right decisions. Thank you for your contribution.



Anti-NTPase NTPCR Antibody

For Research Use Only. Not for use in diagnostic procedures.