

Anti-GAS PAGR1 Antibody

Catalog Number: A13756

About PAGR1

Steroid receptor co-activators (SRCs) were initially described as nuclear receptor transcription co-activators, but they have recently been determined to co-regulate transcription initiated by other transcription factors. GAS is a recently identified glutamate-rich protein that interacts with SRC1, but not GRIP1 or AIB1, the other two members of the SRC family. GAS can also interact with the alpha subunit of the estrogen receptor (ERalpha), but not other receptors such as the retinoic acid receptor α , suggesting the interaction between GAS and ERalpha is relatively specific. Depletion of GAS by RNA interference in MCF7 cells led to a decrease in the mRNA and protein levels of ER target genes such as pS2, c-Myc and cyclin D1, indicating the role of GAS in the regulation of ER target genes. GAS has also been found to associate with an SET1-like methyltransferase complex specific for H3K4 methylation, suggesting that GAS has multiple roles in transcriptional regulation.

Overview

Product Name	Anti-GAS PAGR1 Antibody
Reactive Species	Human, Mouse
Description	Boster Bio Anti-GAS PAGR1 Antibody (Catalog # A13756). Tested in ELISA, WB applications. This antibody reacts with Human, Mouse.
Application	ELISA, WB
Clonality	Polyclonal
Formulation	GAS Antibody is supplied in PBS containing 0.02% sodium azide.
Storage Instructions	GAS antibody can be stored at 4°C for three months and -20°C, stable for up to one year. Avoid repeated freeze-thaw cycles. Antibodies should not be exposed to prolonged high temperatures.
Host	Rabbit
Uniprot ID	Q9BTK6

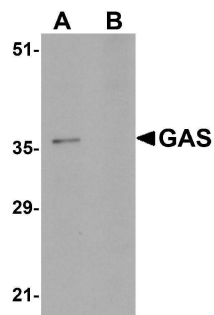
Technical Details

Immunogen	GAS antibody was raised against a 15 amino acid synthetic peptide from near the carboxy terminus of human GAS. The immunogen is located within the last 50 amino acids of GAS.
Predicted Reactive Species	Bovine, Rat
Isotype	IgG
Form	Liquid
Concentration	1 mg/mL
Purification	GAS Antibody is affinity chromatography purified via peptide column.

Suggested Dilutions

GAS antibody can be used for detection of GAS by Western blot at 1 ug/mL.
Antibody validated: Western Blot in mouse samples. All other applications and species not yet tested. Optimal dilutions for each application should be determined by the researcher.

Anti-GAS PAGR1 Antibody (A13756) Images



Western blot analysis of GAS in EL4 cell lysate in (A) the absence and (B) the presence of blocking peptide with GAS antibody at 1ug/mL.

Submit a product review to Biocompare.com

Submit a review of this product to Biocompare.com to receive a \$20 Amazon.com giftcard! Your reviews help your fellow scientists make the right decisions. Thank you for your contribution.



Anti-GAS PAGR1 Antibody

For Research Use Only. Not for use in diagnostic procedures.