

Anti-TMEM30B Antibody Picoband™

Catalog Number: A13764-3

About TMEM30B

Enables aminophospholipid flippase activity. Involved in aminophospholipid transport and positive regulation of protein exit from endoplasmic reticulum. Predicted to be integral component of membrane. Predicted to be active in Golgi apparatus; endoplasmic reticulum; and plasma membrane.

Overview

Product Name	Anti-TMEM30B Antibody Picoband™
Reactive Species	Human, Mouse
Description	Boster Bio Anti-TMEM30B Antibody Picoband™ catalog # A13764-3. Tested in ELISA, WB applications. This antibody reacts with Human, Mouse.
Application	ELISA, WB
Clonality	Polyclonal
Formulation	Each vial contains 4 mg Trehalose, 0.9 mg NaCl, 0.2 mg Na ₂ HPO ₄ .
Storage Instructions	At -20°C for one year from date of receipt. After reconstitution, at 4°C for one month. It can also be aliquotted and stored frozen at -20°C for six months. Avoid repeated freezing and thawing.
Host	Rabbit
Uniprot ID	Q3MIR4

Technical Details

Immunogen	E.coli-derived human TMEM30B recombinant protein (Position: M1-K300).
Recommended Detection Systems	Boster recommends Enhanced Chemiluminescent Kit with anti-Rabbit IgG (EK1002) for Western blot.
Cross Reactivity	No cross-reactivity with other proteins
Isotype	Rabbit IgG
Form	Lyophilized
Concentration	Adding 0.2 ml of distilled water will yield a concentration of 500 µg/ml.
Purification	Immunogen affinity purified.
Suggested Dilutions	Dilute the sample so that the expected range of concentrations fall within the detection range of this kit.

If the expected range of concentration is unknown, a pilot test should be conducted to decide the optimal dilution ratio for your samples.

Some PubMed article(s) citing the expression level of this target are as follows:

Boster Bio's internal QC testing used:

Western blot, 0.25-0.5 µg/ml, Human, Mouse

Direct ELISA, 0.1-0.5 µg/ml, Human

Anti-TMEM30B Antibody Picoband™ (A13764-3) Images

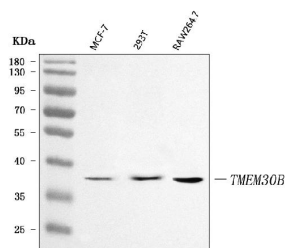


Figure 1. Western blot analysis of TMEM30B using anti-TMEM30B antibody (A13764-3).

Electrophoresis was performed on a 5-20% SDS-PAGE gel at 70V (Stacking gel) / 90V (Resolving gel) for 2-3 hours. The sample well of each lane was loaded with 30 ug of sample under reducing conditions.

Lane 1: human MCF-7 whole cell lysates,

Lane 2: human 293T whole cell lysates,

Lane 3: mouse RAW264.7 whole cell lysates.

After electrophoresis, proteins were transferred to a nitrocellulose membrane at 150 mA for 50-90 minutes. Blocked the membrane with 5% non-fat milk/TBS for 1.5 hour at RT. The membrane was incubated with rabbit anti-TMEM30B antigen affinity purified polyclonal antibody (Catalog # A13764-3) at 0.5 ug/mL overnight at 4°C, then washed with TBS-0.1%Tween 3 times with 5 minutes each and probed with a goat anti-rabbit IgG-HRP secondary antibody at a dilution of 1:5000 for 1.5 hour at RT. The signal is developed using an Enhanced Chemiluminescent detection (ECL) kit (Catalog # EK1002) with Tanon 5200 system. A specific band was detected for TMEM30B at approximately 39 kDa. The expected band size for TMEM30B is at 39 kDa.

Submit a product review to Biocompare.com

Submit a review of this product to Biocompare.com to receive a \$20 Amazon.com giftcard! Your reviews help your fellow scientists make the right decisions. Thank you for your contribution.



Anti-TMEM30B Antibody