

## Anti-LMF2 Antibody Picoband®

Catalog Number: A13780-1

### About LMF2

LMF2 belongs to the lipase maturation factor family. LMF2 is involved in the maturation of specific proteins in the endoplasmic reticulum. It may be required for maturation and transport of active lipoprotein lipase (LPL) through the secretory pathway.

### Overview

Product Name	Anti-LMF2 Antibody Picoband®
Reactive Species	Human, Mouse, Rat
Description	Boster Bio Anti-LMF2 Antibody Picoband® catalog # A13780-1. Tested in ELISA, WB applications. This antibody reacts with Human, Mouse, Rat. The brand Picoband indicates this is a premium antibody that guarantees superior quality, high affinity, and strong signals with minimal background in Western blot applications. Only our best-performing antibodies are designated as Picoband, ensuring unmatched performance.
Application	ELISA, WB
Clonality	Polyclonal
Formulation	Each vial contains 4 mg Trehalose, 0.9 mg NaCl, 0.2 mg Na <sub>2</sub> HPO <sub>4</sub> .
Storage Instructions	At -20°C for one year from date of receipt. After reconstitution, at 4°C for one month. It can also be aliquotted and stored frozen at -20°C for six months. Avoid repeated freezing and thawing.
Host	Rabbit
Uniprot ID	Q9BU23

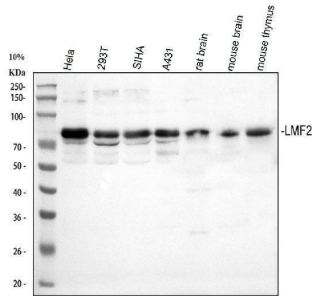
### Technical Details

Immunogen	E.coli-derived human LMF2 recombinant protein (Position: E132-A635). Human LMF2 shares 85.5% and 83.9% amino acid (aa) sequence identity with mouse and rat LMF2, respectively.
Recommended Detection Systems	Boster recommends Enhanced Chemiluminescent Kit with anti-Rabbit IgG (EK1002) for Western blot.
Cross Reactivity	No cross reactivity with other proteins.
Isotype	IgG
Form	Lyophilized
Concentration	Adding 0.2 ml of distilled water will yield a concentration of 500 µg/ml.
Purification	Immunogen affinity purified.

Suggested Dilutions

Western blot, 0.25-0.5 ug/ml, Human, Mouse, Rat  
ELISA, 0.1-0.5 ug/ml, -

## Anti-LMF2 Antibody Picoband® (A13780-1) Images



Western blot analysis of LMF2 using anti-LMF2 antibody (A13780-1). Electrophoresis was performed on a 5-20% SDS-PAGE gel at 70V (Stacking gel) / 90V (Resolving gel) for 2-3 hours. The sample well of each lane was loaded with 30 ug of sample under reducing conditions. Lane 1: human HeLa whole cell lysates, Lane 2: human 293T whole cell lysates, Lane 3: human SiHa whole cell lysates, Lane 4: human A431 whole cell lysates, Lane 5: rat brain tissue lysates, Lane 6: mouse brain tissue lysates, Lane 7: mouse thymus tissue lysates. After electrophoresis, proteins were transferred to a nitrocellulose membrane at 150 mA for 50-90 minutes. Blocked the membrane with 5% non-fat milk/TBS for 1.5 hour at RT. The membrane was incubated with rabbit anti-LMF2 antigen affinity purified polyclonal antibody (Catalog # A13780-1) at 0.5 ug/mL overnight at 4°C, then washed with TBS-0.1%Tween 3 times with 5 minutes each and probed with a goat anti-rabbit IgG-HRP secondary antibody at a dilution of 1:5000 for 1.5 hour at RT. The signal is developed using an Enhanced Chemiluminescent detection (ECL) kit (Catalog # EK1002) with Tanon 5200 system. A specific band was detected for LMF2 at approximately 80 kDa. The expected band size for LMF2 is at 80 kDa.

### Submit a product review to [Biocompare.com](https://www.biocompare.com)

Submit a review of this product to [Biocompare.com](https://www.biocompare.com) to receive a \$20 Amazon.com giftcard! Your reviews help your fellow scientists make the right decisions. Thank you for your contribution.



### Anti-LMF2 Antibody

For Research Use Only. Not for use in diagnostic procedures.