

Anti-Caskin-2 CASKIN2 Antibody

Catalog Number: A13821

About CASKIN2

Calcium/calmodulin-dependent serine protein kinase (CASK) is a conserved multi-domain scaffolding protein involved in brain development, synapse formation, and establishment of cell polarity. CASKINs (CASK interacting protein) interact with CASK and is thought to play a role in CASK function, specifically by coupling CASK to distinct downstream effectors. CASKIN2 is a multidomain protein containing six N-terminal ankyrin repeats, one SH3 domain, and two sterile alpha motif domains followed by a long proline-rich sequence and a short conserved C-terminal domain. It is expressed ubiquitously with highest levels present in fetal and adult liver tissue.

Overview

Product Name	Anti-Caskin-2 CASKIN2 Antibody
Reactive Species	Human
Description	Boster Bio Anti-Caskin-2 CASKIN2 Antibody (Catalog # A13821). Tested in ELISA, WB, ICC, IF applications. This antibody reacts with Human.
Application	ELISA, IF, ICC, WB
Clonality	Polyclonal
Formulation	CASKIN2 Antibody is supplied in PBS containing 0.02% sodium azide.
Storage Instructions	CASKIN2 antibody can be stored at 4°C for three months and -20°C, stable for up to one year. Avoid repeated freeze-thaw cycles. Antibodies should not be exposed to prolonged high temperatures.
Host	Rabbit
Uniprot ID	Q8WXE0

Technical Details

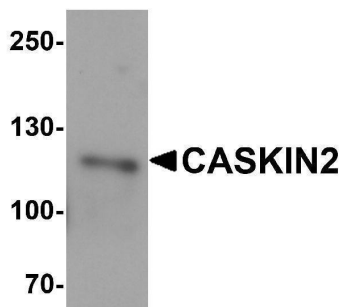
Immunogen	CASKIN2 antibody was raised against a 19 amino acid synthetic peptide near the amino terminus of human CASKIN2. The immunogen is located within amino acids 380 - 430 of CASKIN2.
Predicted Reactive Species	Mouse
Cross Reactivity	CASKIN2 antibody is predicted to not cross-react with other CASKIN family members. Three isoforms of CASKIN2 are known to exist; this antibody will not detect the shortest isoform.
Isotype	IgG
Form	Liquid
Concentration	1 mg/mL
Purification	CASKIN2 Antibody is affinity chromatography purified via peptide column.

Suggested Dilutions

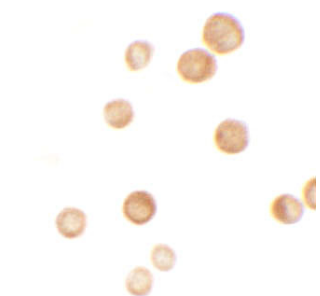
CASKIN2 antibody can be used for detection of EPAC1 by Western blot at 1 ug/mL. Antibody can also be used for immunocytochemistry starting at 2.5 ug/mL. For immunofluorescence start at 5 ug/mL.

Antibody validated: Western Blot in human samples; Immunocytochemistry in human samples and Immunofluorescence in human samples. All other applications and species not yet tested. Optimal dilutions for each application should be determined by the researcher.

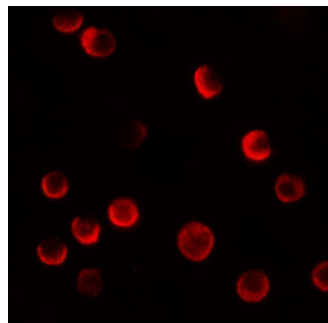
Anti-Caskin-2 CASKIN2 Antibody (A13821) Images



Western blot analysis of CASKIN2 HeLa cell tissue lysate with CASKIN2 antibody at 1 ug/mL.



Immunocytochemistry of CASKIN2 in HeLa cells with CASKIN2 antibody at 2.5 ug/mL.



Immunofluorescence of CASKIN2 in HeLa cells with CASKIN2 antibody at 20 ug/mL.

Submit a product review to [Biocompare.com](https://www.biocompare.com)

Submit a review of this product to [Biocompare.com](https://www.biocompare.com) to receive a \$20 Amazon.com giftcard! Your reviews help your fellow scientists make the right decisions. Thank you for your contribution.



Anti-Caskin-2 CASKIN2 Antibody

For Research Use Only. Not for use in diagnostic procedures.