

## Anti-MRP-S2 Antibody

Catalog Number: A13824S2

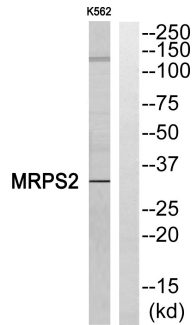
### Overview

Product Name	Anti-MRP-S2 Antibody
Reactive Species	Human, Mouse
Description	Boster Bio Anti-MRP-S2 Antibody catalog # A13824S2. Tested in ELISA, IHC, WB applications. This antibody reacts with Human.
Application	ELISA, IF, IHC, WB
Clonality	Polyclonal
Formulation	Liquid in PBS containing 50% glycerol, 0.5% stabilizing protein and 0.02% sodium azide. This antibody is supplied in a stabilized formulation. Compatibility with conjugation reactions depends on the chemistry of the conjugation method used. For conjugation methods that are not compatible with the stabilizing components present in this formulation, a carrier-free antibody format is required.
Storage Instructions	Store at -20°C for one year. For short term storage and frequent use, store at 4°C for up to one month. Avoid repeated freeze-thaw cycles.
Host	Rabbit
Uniprot ID	Q9Y399

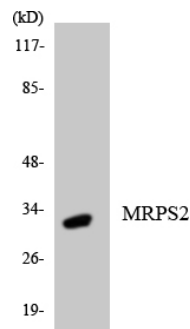
### Technical Details

Immunogen	The antiserum was produced against synthesized peptide derived from human MRPS2. AA range:236-285
Isotype	IgG
Form	Liquid
Concentration	1 mg/ml
Purification	The antibody was affinity-purified from rabbit antiserum by affinity-chromatography using epitope-specific immunogen.
Suggested Dilutions	WB 1:500-1:2000 IHC 1:100-1:300 ELISA 1:5000 IF 1:50-200

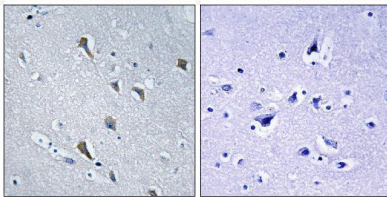
## Anti-MRP-S2 Antibody (A13824S2) Images



Western blot analysis of MRP-S2 Antibody. The lane on the right is blocked with the MRP-S2 peptide.



Western blot analysis of the lysates from HepG2 cells using MRP-S2 antibody.



Immunohistochemistry analysis of paraffin-embedded human brain, using MRP-S2 Antibody. The lane on the right is blocked with the MRP-S2 peptide.

### Submit a product review to [Biocompare.com](https://www.biocompare.com)

Submit a review of this product to [Biocompare.com](https://www.biocompare.com) to receive a \$20 Amazon.com giftcard! Your reviews help your fellow scientists make the right decisions. Thank you for your contribution.



Anti-MRP-S2 Antibody

For Research Use Only. Not for use in diagnostic procedures.