

Anti-SLAM family member 9 SLAMF9 Antibody

Catalog Number: A13838

About SLAMF9

The SLAM (signalling lymphocyte activation molecule) family is a novel group of receptors on T cells in modulating the immune response. SLAMF9, also known as CD2F-10 or CD84 homolog, is a 289 amino acid type I transmembrane protein that shares 58% identity with the mouse protein. The SLAMF9 protein is predominantly expressed in hematopoietic tissues and contains an extracellular region with only two N-linked glycosylation sites, a 20-residue transmembrane region and a highly positively charged 30-residue cytoplasmic tail, suggesting a role for SLAMF9 as an adhesion molecule. SLAMF9 is thought to function in the immune response as a coreceptor for lymphocyte activation.

Overview

Product Name	Anti-SLAM family member 9 SLAMF9 Antibody
Reactive Species	Human, Mouse, Rat
Description	Boster Bio Anti-SLAM family member 9 SLAMF9 Antibody (Catalog # A13838). Tested in ELISA, WB, IHC-P, IF applications. This antibody reacts with Human, Mouse, Rat.
Application	ELISA, IF, IHC-P, WB
Clonality	Polyclonal
Formulation	SLAMF9 Antibody is supplied in PBS containing 0.02% sodium azide.
Storage Instructions	SLAMF9 antibody can be stored at 4°C for three months and -20°C, stable for up to one year. Avoid repeated freeze-thaw cycles. Antibodies should not be exposed to prolonged high temperatures.
Host	Rabbit
Uniprot ID	Q96A28

Technical Details

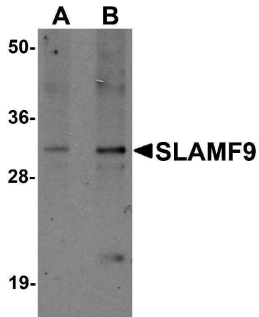
Immunogen	SLAMF9 antibody was raised against a 19 amino acid synthetic peptide near the carboxy terminus of human SLAMF9. The immunogen is located within the last 50 amino acids of SLAMF9.
Predicted Reactive Species	Mouse
Cross Reactivity	SLAMF9 antibody is predicted to not cross-react with other SLAM protein family members.
Isotype	IgG
Form	Liquid
Concentration	1 mg/mL
Purification	SLAMF9 Antibody is affinity chromatography purified via peptide column.

Suggested Dilutions

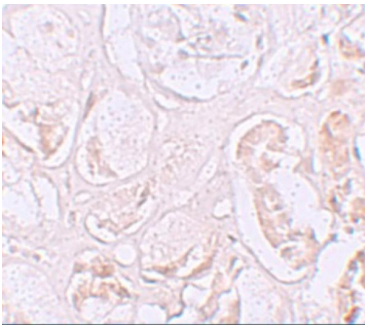
SLAMF9 antibody can be used for detection of SLAMF9 by Western blot at 1 - 2 ug/mL. Antibody can also be used for immunohistochemistry starting at 2.5 ug/mL. For immunofluorescence start at 20 ug/mL.

Antibody validated: Western Blot in mouse samples; Immunohistochemistry in human samples and Immunofluorescence in human samples. All other applications and species not yet tested. Optimal dilutions for each application should be determined by the researcher.

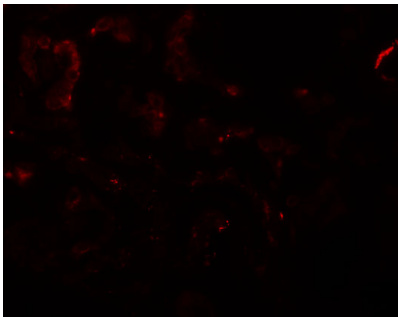
Anti-SLAM family member 9 SLAMF9 Antibody (A13838) Images



Western blot analysis of SLAMF9 in mouse kidney tissue lysate with SLAMF9 antibody at (A) 1 and (B) 2 ug/mL.



Immunohistochemistry of SLAMF9 in human kidney tissue with SLAMF9 antibody at 2.5 ug/mL.



Immunofluorescence of SLAMF9 in human kidney tissue with SLAMF9 antibody at 20 ug/mL.

Submit a product review to [Biocompare.com](https://www.biocompare.com)

Submit a review of this product to [Biocompare.com](https://www.biocompare.com) to receive a \$20 Amazon.com giftcard! Your reviews help your fellow scientists make the right decisions. Thank you for your contribution.



Anti-SLAM family member 9 SLAMF9 Antibody

For Research Use Only. Not for use in diagnostic procedures.