

Anti-Kelch-like protein 15 KLHL15 Antibody

Catalog Number: A13892

About KLHL15

KLHL15 is a member of a growing superfamily of kelch repeat-containing proteins. The kelch motif was discovered in the sequence of the *Drosophila* kelch ORF1 protein and forms a conserved beta-propeller tertiary structure. These kelch-like proteins have been implicated in embryogenesis and carcinogenesis through cytoskeleton organization. KLHL15 mRNA is widely expressed in many tissues and is thought to be involved in protein ubiquitination and cytoskeleton organization.

Overview

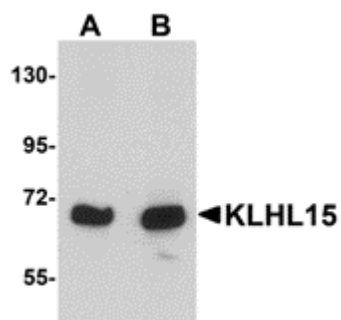
Product Name	Anti-Kelch-like protein 15 KLHL15 Antibody
Reactive Species	Human, Mouse, Rat
Description	Boster Bio Anti-Kelch-like protein 15 KLHL15 Antibody (Catalog # A13892). Tested in ELISA, WB, ICC, IF applications. This antibody reacts with Human, Mouse, Rat.
Application	ELISA, IF, ICC, WB
Clonality	Polyclonal
Formulation	KLHL15 Antibody is supplied in PBS containing 0.02% sodium azide.
Storage Instructions	KLHL15 antibody can be stored at 4°C for three months and -20°C, stable for up to one year. Avoid repeated freeze-thaw cycles. Antibodies should not be exposed to prolonged high temperatures.
Host	Rabbit
Uniprot ID	Q96M94

Technical Details

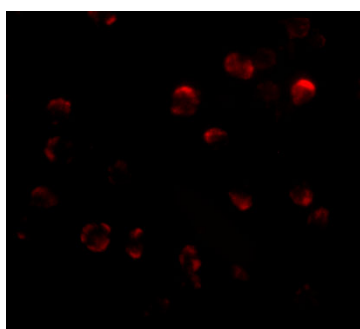
Immunogen	KLHL15 antibody was raised against a 15 amino acid synthetic peptide near the carboxy terminus of human KLHL15. The immunogen is located within the last 50 amino acids of KLHL15.
Predicted Reactive Species	Bovine
Isotype	IgG
Form	Liquid
Concentration	1 mg/mL
Purification	KLHL15 Antibody is affinity chromatography purified via peptide column.
Suggested Dilutions	KLHL15 antibody can be used for detection of KLHL15 by Western blot at 1 - 2 ug/mL. Antibody can also be used for immunocytochemistry starting at 5 ug/mL. For immunofluorescence start at 20 ug/mL.

Antibody validated: Western Blot in human samples; Immunocytochemistry in human samples and Immunofluorescence in human samples. All other applications and species not yet tested. Optimal dilutions for each application should be determined by the researcher.

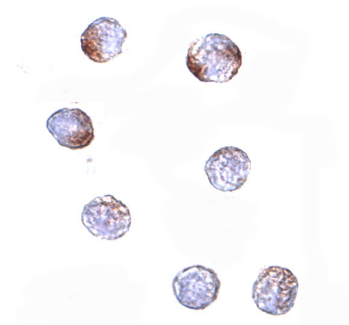
Anti-Kelch-like protein 15 KLHL15 Antibody (A13892) Images



Western blot analysis of KLHL15 in HeLa cell lysate with KLHL15 antibody at (A) 1 and (B) 2 ug/mL.



Immunofluorescence of KLHL15 in HeLa cells with KLHL15 antibody at 20 ug/mL.



Immunocytochemistry of KLHL15 in HeLa cells with KLHL15 antibody at 5 ug/mL.

Submit a product review to [Biocompare.com](https://www.biocompare.com)

Submit a review of this product to [Biocompare.com](https://www.biocompare.com) to receive a \$20 Amazon.com giftcard! Your reviews help your fellow scientists make the right decisions. Thank you for your contribution.



Anti-Kelch-like protein 15 KLHL15 Antibody

For Research Use Only. Not for use in diagnostic procedures.