

Anti-ZIP11 SLC39A11 Antibody

Catalog Number: A13919

About SLC39A11

ZIP11, also known as Slc39A11, is a member of the broader ZIP family of multi-transmembrane domain metal ion transporters. Zinc is an essential ion for cells and plays significant roles in the growth, development, and differentiation. Members of the ZIP family generally transport metal ions from the cell exterior or lumen of intracellular organelles into the cytoplasm, as opposed to the ZnT (SLC30) family of zinc transporters that serve to reduce intracellular zinc availability by promoting zinc efflux from cells or into intracellular vesicles. At least three isoforms of ZIP11 are known to exist.

Overview

| | |
|----------------------|--|
| Product Name | Anti-ZIP11 SLC39A11 Antibody |
| Reactive Species | Human, Mouse, Rat |
| Description | Boster Bio Anti-ZIP11 SLC39A11 Antibody (Catalog # A13919). Tested in ELISA, WB, IHC-P applications. This antibody reacts with Human, Mouse, Rat. |
| Application | ELISA, IHC-P, WB |
| Clonality | Polyclonal |
| Formulation | ZIP11 Antibody is supplied in PBS containing 0.02% sodium azide. |
| Storage Instructions | ZIP11 antibody can be stored at 4°C for three months and -20°C, stable for up to one year. Avoid repeated freeze-thaw cycles. Antibodies should not be exposed to prolonged high temperatures. |
| Host | Rabbit |
| Uniprot ID | Q8N1S5 |

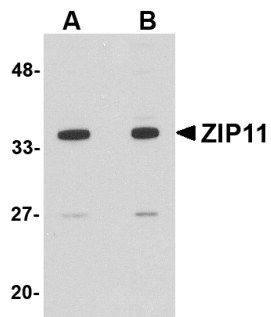
Technical Details

| | |
|----------------------------|---|
| Immunogen | ZIP11 antibody was raised against a 15 amino acid synthetic peptide near the center of the human ZIP11. The immunogen is located within amino acids 130 - 180 of ZIP11. |
| Predicted Reactive Species | Bovine |
| Cross Reactivity | This antibody will not cross-react with the zinc transporter ZIP10. |
| Isotype | IgG |
| Form | Liquid |
| Concentration | 1 mg/mL |
| Purification | ZIP11 Antibody is affinity chromatography purified via peptide column. |

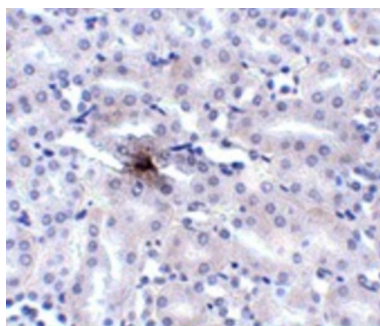
Suggested Dilutions

ZIP11 antibody can be used for detection of ZIP11 by Western blot at 1 - 2 ug/mL. Antibody can also be used for immunohistochemistry starting at 2.5 ug/mL.
Antibody validated: Western Blot in mouse samples and Immunohistochemistry in mouse samples.
All other applications and species not yet tested. Optimal dilutions for each application should be determined by the researcher.

Anti-ZIP11 SLC39A11 Antibody (A13919) Images



Western blot analysis of ZIP11 in mouse kidney tissue lysate with ZIP11 antibody at (A) 1 and (B) 2 ug/mL.



Immunohistochemistry of ZIP11 in mouse kidney tissue with ZIP11 antibody at 2.5 ug/mL.

Submit a product review to [Biocompare.com](https://www.biocompare.com)

Submit a review of this product to [Biocompare.com](https://www.biocompare.com) to receive a \$20 Amazon.com giftcard! Your reviews help your fellow scientists make the right decisions. Thank you for your contribution.



Anti-ZIP11 SLC39A11 Antibody

For Research Use Only. Not for use in diagnostic procedures.