

Anti-EME2 Rabbit Polyclonal Antibody

Catalog Number: A13928

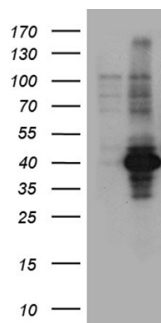
Overview

Product Name	Anti-EME2 Rabbit Polyclonal Antibody
Reactive Species	Human
Description	Boster Bio Rabbit Polyclonal anti-EME2 Antibody. Catalog# A13928. Tested in WB. This antibody reacts with Human.
Conjugate	Unconjugated
Application	WB
Clonality	Polyclonal
Formulation	PBS with 0.02% sodium azide, 50% glycerol, pH7.3
Storage Instructions	Store at -20°C for one year. For short term storage and frequent use, store at 4°C for up to one month. Avoid repeated freeze-thaw cycles.
Host	Rabbit
Uniprot ID	A4GXA9

Technical Details

Immunogen	Recombinant protein of human EME2
Isotype	IgG
Concentration	3.93 mg/ml
Purification	Purified from the immunized serum by affinity chromatography (Protein A/G)
Suggested Dilutions	WB: 1:500~2000

Anti-EME2 Rabbit Polyclonal Antibody (A13928) Images



HEK293T cells were transfected with the pCMV6-ENTRY control (Left lane) or pCMV6-ENTRY EME2 (Right lane) cDNA for 48 hrs and lysed. Equivalent amounts of cell lysates (5 ug per lane) were separated by SDS-PAGE and immunoblotted with anti-EME2 ra.

Submit a product review to Biocompare.com

Submit a review of this product to Biocompare.com to receive a \$20 Amazon.com giftcard! Your reviews help your fellow scientists make the right decisions. Thank you for your contribution.



Anti-EME2 Rabbit Polyclonal Antibody

For Research Use Only. Not for use in diagnostic procedures.