

Anti-Lano LRRC1 Antibody

Catalog Number: A13956

About LRRC1

Lano is a member of the LAP (leucine-rich repeats and PDZ) family of proteins that also includes Densin-180, Erbin, and hScribble. The LAP proteins generally contain multiple leucine-rich repeat (LRR) domains which serve to target them to the basolateral membrane of epithelial cells. Lano is unique in that it alone does not possess one or more PDZ (PSD95/DLG/ZO-1) domains as do the other members of the LAP family. However, it can bind to the PDZ domain of Erbin in addition to those of membrane-associated and guanylate kinase (MAGUK) proteins which regulate adhesion and plasticity at cell junctions. It has been suggested that it is through these interaction that these LAP proteins participate in the maintenance of proper embryonic development and integrity of epithelial tissues.

Overview

Product Name	Anti-Lano LRRC1 Antibody
Reactive Species	Human
Description	Boster Bio Anti-Lano LRRC1 Antibody (Catalog # A13956). Tested in ELISA, WB, IHC-P, IF applications. This antibody reacts with Human.
Application	ELISA, IF, IHC-P, WB
Clonality	Polyclonal
Formulation	Lano Antibody is supplied in PBS containing 0.02% sodium azide.
Storage Instructions	Lano antibody can be stored at 4°C for three months and -20°C, stable for up to one year. Avoid repeated freeze-thaw cycles. Antibodies should not be exposed to prolonged high temperatures.
Host	Rabbit
Uniprot ID	Q9BTT6

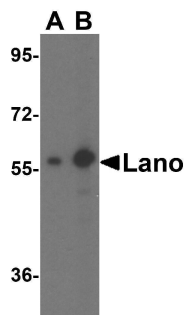
Technical Details

Immunogen	Lano antibody was raised against a peptide corresponding to 15 amino acids near the carboxy terminus of human Lano. The immunogen is located within the last 50 amino acids of Lano.
Predicted Reactive Species	Mouse
Isotype	IgG
Form	Liquid
Concentration	1 mg/mL
Purification	Lano Antibody is affinity chromatography purified via peptide column.

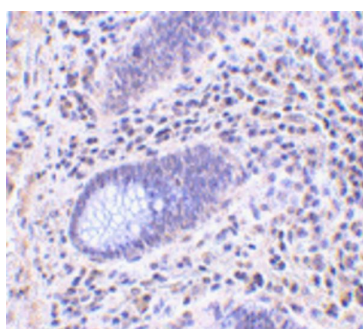
Suggested Dilutions

Lano antibody can be used for detection of Lano by Western blot at 1 - 2 ug/mL. Antibody can also be used for immunohistochemistry starting at 10 ug/mL. For immunofluorescence start at 20 ug/mL. Antibody validated: Western Blot in human samples; Immunohistochemistry in human samples and Immunofluorescence in human samples. All other applications and species not yet tested. Optimal dilutions for each application should be determined by the researcher.

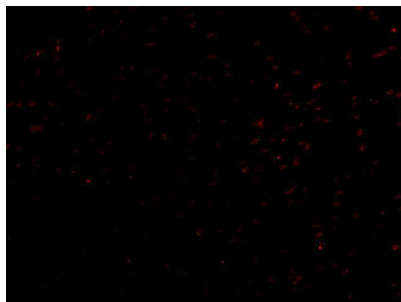
Anti-Lano LRRC1 Antibody (A13956) Images



Western blot analysis of Lano expression in A431 cell lysate with Lano antibody at (A) 1 and (B) 2 ug/ml.



Immunohistochemistry of Lano in human colon tissue with Lano antibody at 10 ug/mL.



Immunofluorescence of Lano in human colon tissue with Lano antibody at 20 ug/mL.

Submit a product review to [Biocompare.com](https://www.biocompare.com)

Submit a review of this product to [Biocompare.com](https://www.biocompare.com) to receive a \$20 Amazon.com giftcard! Your reviews help your fellow scientists make the right decisions. Thank you for your contribution.



Anti-Lano LRRC1 Antibody

For Research Use Only. Not for use in diagnostic procedures.