

Anti-LRFN3 Antibody

Catalog Number: A13983

About LRFN3

LRFN3 is one of a family of five transmembrane glycoproteins that are highly expressed in neuronal tissues. LRFN proteins share leucine-rich repeat (LRR)-immunoglobulin-like (Ig)-fibronectin type III (Fn)-transmembrane domain structure with other members of the LRR-Ig-Fn protein superfamily such as the Slitrk family of proteins. Expression of LRFN1, -3, and -4 mRNA was detected in embryonic neuronal cells, while Lrnf2 and Lrnf5 expression was primarily restricted to more mature cells. LRFN1, -2, and -4 bound to PDZ domains of postsynaptic PSD95, re-distributing PSD95 to the cell periphery. It has been suggested that the Lrnf proteins play a role in the developing and/or mature vertebrate nervous system.

Overview

Product Name	Anti-LRFN3 Antibody
Reactive Species	Human, Mouse, Rat
Description	Boster Bio Anti-LRFN3 Antibody (Catalog # A13983). Tested in ELISA, WB, IHC-P, IF applications. This antibody reacts with Human, Mouse, Rat.
Application	ELISA, IF, IHC-P, WB
Clonality	Polyclonal
Formulation	LRFN3 Antibody is supplied in PBS containing 0.02% sodium azide.
Storage Instructions	LRFN3 antibody can be stored at 4°C for three months and -20°C, stable for up to one year. Avoid repeated freeze-thaw cycles. Antibodies should not be exposed to prolonged high temperatures.
Host	Rabbit
Uniprot ID	Q9BTN0

Technical Details

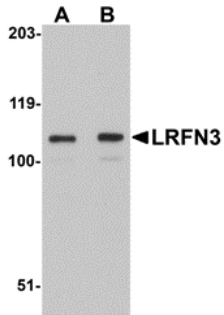
Immunogen	LRFN3 antibody was raised against a 16 amino acid synthetic peptide near the center of human LRFN3. The immunogen is located within amino acids 380 - 430 of LRFN3.
Predicted Reactive Species	Bovine
Cross Reactivity	This antibody is predicted to not cross-react with other members of the LRFN family.
Isotype	IgG
Form	Liquid
Concentration	1 mg/mL
Purification	LRFN3 Antibody is affinity chromatography purified via peptide column.

Suggested Dilutions

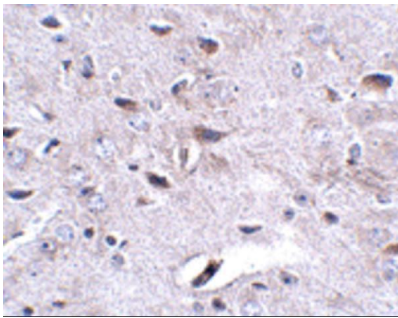
LRFN3 antibody can be used for detection of LRFN3 by Western blot at 1 - 2 ug/mL. Antibody can also be used for immunohistochemistry starting at 2.5 ug/mL. For immunofluorescence start at 20 ug/mL.

Antibody validated: Western Blot in human samples; Immunohistochemistry in mouse samples and Immunofluorescence in mouse samples. All other applications and species not yet tested. Optimal dilutions for each application should be determined by the researcher.

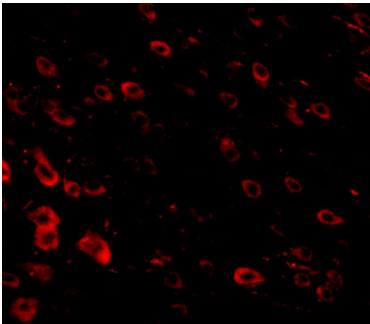
Anti-LRFN3 Antibody (A13983) Images



Western blot analysis of LRFN3 in K562 lysate with LRFN3 antibody at (A) 1 and (B) 2 ug/mL.



Immunohistochemistry of LRFN3 in mouse brain tissue with LRFN3 antibody at 2.5 ug/mL.



Immunofluorescence of LRFN3 in mouse brain tissue with LRFN3 antibody at 20 ug/mL.

Submit a product review to [Biocompare.com](https://www.biocompare.com)

Submit a review of this product to [Biocompare.com](https://www.biocompare.com) to receive a \$20 Amazon.com giftcard! Your reviews help your fellow scientists make the right decisions. Thank you for your contribution.



Anti-LRFN3 Antibody

For Research Use Only. Not for use in diagnostic procedures.