

Anti-ARL15 Antibody

Catalog Number: A13987

About ARL15

ADP-ribosylation factors (ARFs) are highly conserved guanine nucleotide binding proteins that enhance the ADP-ribosyltransferase activity of cholera toxin. ARFs are important in eukaryotic vesicular trafficking pathways and they play an essential role in the activation of phospholipase D (PC-PLD). ARL15 (ADP-ribosylation factor-like 15), is a member of the ARF family of the Ras superfamily of small GTPases that are known to be involved in multiple regulatory pathways altered in human carcinogenesis. Other members of this protein family include ARL11, thought to be a tumor suppressor and may play a role in the regulation of apoptosis, ARL2 which plays an important role in microtubule dynamics and cell cycle progression, and ARL4, which may play a role in neurogenesis during embryonic development. The gene encoding ARL15 maps to chromosome 5p15 in humans. At least three isoforms of ARL15 are known to exist.

Overview

Product Name	Anti-ARL15 Antibody
Reactive Species	Human, Mouse, Rat
Description	Boster Bio Anti-ARL15 Antibody (Catalog # A13987). Tested in ELISA, WB, IHC-P applications. This antibody reacts with Human, Mouse, Rat.
Application	ELISA, IHC-P, WB
Clonality	Polyclonal
Formulation	ARL15 Antibody is supplied in PBS containing 0.02% sodium azide.
Storage Instructions	ARL15 antibody can be stored at 4°C for three months and -20°C, stable for up to one year. Avoid repeated freeze-thaw cycles. Antibodies should not be exposed to prolonged high temperatures.
Host	Rabbit
Uniprot ID	Q9NXU5

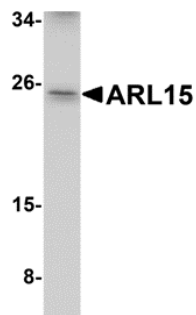
Technical Details

Immunogen	ARL15 antibody was raised against a 17 amino acid synthetic peptide near the center of human ARL15. The immunogen is located within amino acids 130 - 180 of ARL15.
Predicted Reactive Species	Bovine
Isotype	IgG
Form	Liquid
Concentration	1 mg/mL
Purification	ARL15 Antibody is affinity chromatography purified via peptide column.

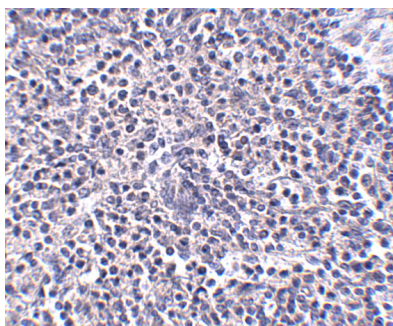
Suggested Dilutions

ARL15 antibody can be used for detection of Arl15 by Western blot at 1 ug/mL. Antibody can also be used for immunohistochemistry starting at 5 ug/mL.
Antibody validated: Western Blot in human samples and Immunohistochemistry in human samples. All other applications and species not yet tested. Optimal dilutions for each application should be determined by the researcher.

Anti-ARL15 Antibody (A13987) Images



Western blot analysis of ARL15 in K562 cell lysate with ARL15 antibody at 1 ug/mL.



Immunohistochemistry of ARL15 in human spleen tissue with ARL15 antibody at 5 ug/mL.

Submit a product review to [Biocompare.com](https://www.biocompare.com)

Submit a review of this product to [Biocompare.com](https://www.biocompare.com) to receive a \$20 Amazon.com giftcard! Your reviews help your fellow scientists make the right decisions. Thank you for your contribution.



Anti-ARL15 Antibody

For Research Use Only. Not for use in diagnostic procedures.