

Anti-ZBED3 Antibody

Catalog Number: A14001-1

About ZBED3

Axin is a key modulator of the Wnt/beta-catenin pathway and acts as a scaffold protein in phosphorylating and degrading cytoplasmic beta-catenin. ZBED3, a member of the Zinc finger BED-type domain containing superfamily, has been recently identified as an Axin-interacting protein and has been suggested to modulate the Wnt/beta-catenin signaling pathway. RNA interference (RNAi) experiments targeting ZBED3 RNA attenuated Wnt-induced beta-catenin accumulation, lymphoid enhancer binding factor-1-dependent luciferase reporter activity, and Wnt gene expression.

Overview

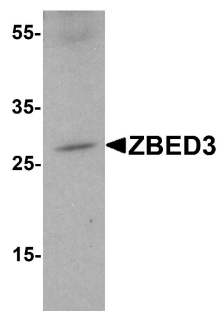
Product Name	Anti-ZBED3 Antibody
Reactive Species	Human, Mouse, Rat
Description	Boster Bio Anti-ZBED3 Antibody (Catalog # A14001-1). Tested in ELISA, WB applications. This antibody reacts with Human, Mouse, Rat.
Application	ELISA, WB
Clonality	Polyclonal
Formulation	ZBED3 Antibody is supplied in PBS containing 0.02% sodium azide.
Storage Instructions	ZBED3 antibody can be stored at 4°C for three months and -20°C, stable for up to one year. Avoid repeated freeze-thaw cycles. Antibodies should not be exposed to prolonged high temperatures.
Host	Rabbit
Uniprot ID	Q96IU2

Technical Details

Immunogen	ZBED3 antibody was raised against a 17 amino acid synthetic peptide from near the amino terminus of human ZBED3. The immunogen is located within the first 50 amino acids of ZBED3.
Predicted Reactive Species	Bovine
Cross Reactivity	This antibody is predicted to have no cross-reactivity to ZBED1 or ZBED2.
Isotype	IgG
Form	Liquid
Concentration	1 mg/mL
Purification	ZBED3 Antibody is affinity chromatography purified via peptide column.
Suggested Dilutions	ZBED3 antibody can be used for detection of ZBED3 by Western blot at 1 - 2 ug/mL. Despite its

predicted molecular weight, ZBED3 often migrates at a higher position in SDS-PAGE.
Antibody validated: Western Blot in mouse samples. All other applications and species not yet tested. Optimal dilutions for each application should be determined by the researcher.

Anti-ZBED3 Antibody (A14001-1) Images



Western blot analysis of ZBED3 in A-20 cell lysate with ZBED3 antibody at 1 ug/ml.

Submit a product review to Biocompare.com

Submit a review of this product to Biocompare.com to receive a \$20 Amazon.com giftcard! Your reviews help your fellow scientists make the right decisions. Thank you for your contribution.



Anti-ZBED3 Antibody