

Anti-SAPAP3 DLGAP3 Antibody

Catalog Number: A14041

About DLGAP3

SAP90/PSD-95-associated protein 3 (SAPAP3, also known as DLGAP3) is a member of a protein family whose members specifically interact with PSD-95/SAP90, a membrane-associated guanylate kinase localized at postsynaptic density (PSD) in neuronal cells. Like the other SAPAP proteins, SAPAP3 is thought to be an adaptor protein that also interacts with different synaptic scaffolding proteins, cytoskeletal and signaling components, such as focal adhesion kinase (FAK) and proline-rich tyrosine kinase 2 (PYK2). Both SAPAP3 protein and mRNA are targeted to dendrites, whereas SAPAP1, -2, and -4 mRNAs are detected mainly in cell bodies. Recent experiments have suggested that SAPAP3 may be involved in obsessive-compulsive disorder (OCD), as mice lacking SAPAP3 exhibited OCD-like symptoms which could be relieved by lentiviral-mediated selective expression of SAPAP3 in the striatum of SAPAP3-mutant mice. At least two isoforms are known to exist.

Overview

Product Name	Anti-SAPAP3 DLGAP3 Antibody
Reactive Species	Human, Mouse, Rat
Description	Boster Bio Anti-SAPAP3 DLGAP3 Antibody (Catalog # A14041). Tested in ELISA, WB, IHC-P, IF applications. This antibody reacts with Human, Mouse, Rat.
Application	ELISA, IF, IHC-P, WB
Clonality	Polyclonal
Formulation	SAPAP3 Antibody is supplied in PBS containing 0.02% sodium azide.
Storage Instructions	SAPAP3 antibody can be stored at 4°C for three months and -20°C, stable for up to one year. Avoid repeated freeze-thaw cycles. Antibodies should not be exposed to prolonged high temperatures.
Host	Rabbit
Uniprot ID	O95886

Technical Details

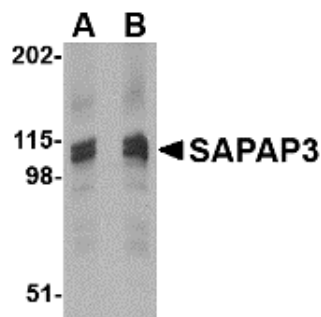
Immunogen	SAPAP3 antibody was raised against a 18 amino acid synthetic peptide from near the carboxy terminus of human SAPAP3. The immunogen is located within the last 50 amino acids of SAPAP3.
Predicted Reactive Species	Bovine
Isotype	IgG
Form	Liquid
Concentration	1 mg/mL
Purification	SAPAP3 Antibody is affinity chromatography purified via peptide column.

Suggested Dilutions

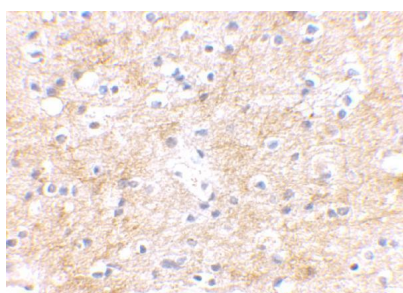
SAPAP3 antibody can be used for detection of SAPAP3 by Western blot at 1 ug/mL. Antibody can also be used for immunohistochemistry starting at 2.5 ug/mL. For immunofluorescence start at 20 ug/mL.

Antibody validated: Western Blot in rat samples; Immunohistochemistry in human samples and Immunofluorescence in human samples. All other applications and species not yet tested. Optimal dilutions for each application should be determined by the researcher.

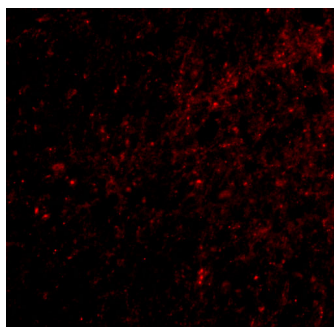
Anti-SAPAP3 DLGAP3 Antibody (A14041) Images



Western blot analysis of SAPAP3 in rat brain tissue lysate with SAPAP3 antibody at (A) 1 (B) 2 ug/mL.



Immunohistochemical staining of human brain tissue using SAPAP3 antibody at 2.5 ug/mL.



Immunofluorescence of SAPAP3 in human brain tissue with SAPAP3 antibody at 20 ug/mL.

Submit a product review to [Biocompare.com](https://www.biocompare.com)

Submit a review of this product to [Biocompare.com](https://www.biocompare.com) to receive a \$20 Amazon.com giftcard! Your reviews help your fellow scientists make the right decisions. Thank you for your contribution.



Anti-SAPAP3 DLGAP3 Antibody

For Research Use Only. Not for use in diagnostic procedures.