

## Anti-Homeobox protein DBX1 DBX1 Antibody

Catalog Number: A14046

### About DBX1

DBX1 is implicated in patterning the central nervous system during embryogenesis. DBX1 homeodomain transcription factor is expressed in progenitors which are critical in establishing cell fate allocation and cell diversity. DBX1 has a key role in regulating the distinct phenotypic features that distinguish two major classes of ventral interneurons, V0 and V1 neurons. DBX1-derived neurons are essential for the transgenic expression and generation of respiratory behavior both in vitro and in vivo.

### Overview

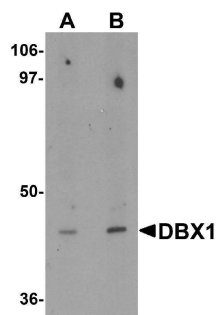
Product Name	Anti-Homeobox protein DBX1 DBX1 Antibody
Reactive Species	Human, Mouse, Rat
Description	Boster Bio Anti-Homeobox protein DBX1 DBX1 Antibody (Catalog # A14046). Tested in ELISA, WB, IHC-P, IF applications. This antibody reacts with Human, Mouse, Rat.
Application	ELISA, IF, IHC-P, WB
Clonality	Polyclonal
Formulation	DBX1 Antibody is supplied in PBS containing 0.02% sodium azide.
Storage Instructions	DBX1 antibody can be stored at 4°C for three months and -20°C, stable for up to one year. Avoid repeated freeze-thaw cycles. Antibodies should not be exposed to prolonged high temperatures.
Host	Rabbit
Uniprot ID	A6NMT0

### Technical Details

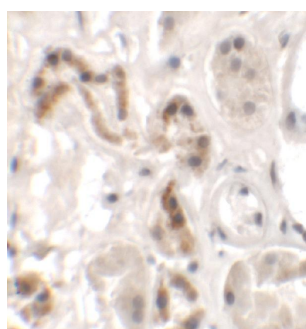
Immunogen	DBX1 antibody was raised against a 15 amino acid synthetic peptide near the center of human DBX1. The immunogen is located within amino acids 100 - 150 of DBX1.
Predicted Reactive Species	Bovine
Cross Reactivity	DBX1 antibody is predicted to not cross-react with other DBX protein family members
Isotype	IgG
Form	Liquid
Concentration	1 mg/mL
Purification	DBX1 Antibody is affinity chromatography purified via peptide column.
Suggested Dilutions	DBX1 antibody can be used for detection of DBX1 by Western blot at 1 - 2 ug/mL. Antibody can also

be used for immunohistochemistry starting at 2.5 ug/mL. For immunofluorescence start at 20 ug/mL. Antibody validated: Western Blot in mouse samples; Immunohistochemistry in human samples and Immunofluorescence in human samples. All other applications and species not yet tested. Optimal dilutions for each application should be determined by the researcher.

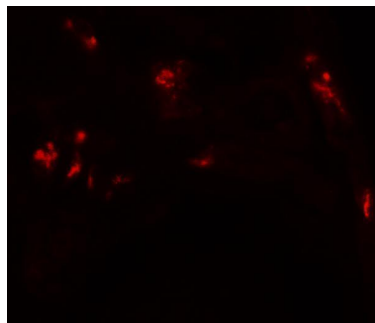
## Anti-Homeobox protein DBX1 DBX1 Antibody (A14046) Images



Western blot analysis of DBX1 in mouse kidney tissue lysate with DBX1 antibody at (A) 1 and (B) 2 ug/mL.



Immunohistochemistry of DBX1 in human kidney tissue with DBX1 antibody at 2.5 ug/mL.



Immunofluorescence of DBX1 in human kidney tissue with DBX1 antibody at 20 ug/mL.

### Submit a product review to [Biocompare.com](https://www.biocompare.com)

Submit a review of this product to [Biocompare.com](https://www.biocompare.com) to receive a \$20 Amazon.com giftcard! Your reviews help your fellow scientists make the right decisions. Thank you for your contribution.



Anti-Homeobox protein DBX1 DBX1 Antibody

For Research Use Only. Not for use in diagnostic procedures.