

Anti-Myosin light chain 6B MYL6B Antibody

Catalog Number: A14059

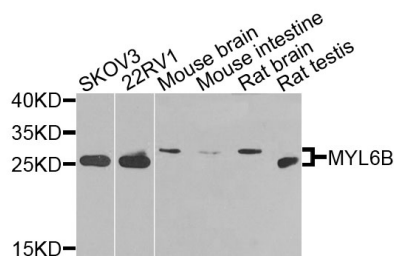
Overview

Product Name	Anti-Myosin light chain 6B MYL6B Antibody
Reactive Species	Human, Mouse, Rat
Description	Boster Bio Anti-Myosin light chain 6B MYL6B Antibody catalog # A14059. Tested in WB applications. This antibody reacts with Human, Mouse, Rat.
Application	WB
Clonality	Polyclonal
Formulation	Rabbit IgG, 1mg/ml in PBS with 0.02% sodium azide, 50% glycerol, pH7.2
Storage Instructions	Store at -20°C for one year. For short term storage and frequent use, store at 4°C for up to one month. Avoid repeated freeze-thaw cycles.
Host	Rabbit
Uniprot ID	P14649

Technical Details

Immunogen	Recombinant protein of human MYL6B.
Isotype	IgG
Form	Liquid
Concentration	1 mg/ml
Purification	The antibody was affinity-purified from rabbit antiserum by affinity-chromatography using epitope-specific immunogen and the purity is > 95% (by SDS-PAGE).
Suggested Dilutions	WB: 1:200-1:500

Anti-Myosin light chain 6B MYL6B Antibody (A14059) Images



Western blot analysis of extracts of various cells, using MYL6B antibody.

1 Publications Citing This Product

1. PubMed ID: 10.1093/hmg/ddy439, Impact of Fgf10 deficiency on pulmonary vasculature formation in a mouse model of bronchopulmonary dysplasia

Visit bosterbio.com/anti-myosin-light-chain-6b-myl6b-antibody-a14059-boster.html to see all 1 publications.

Submit a product review to Biocompare.com

Submit a review of this product to Biocompare.com to receive a \$20 Amazon.com giftcard! Your reviews help your fellow scientists make the right decisions. Thank you for your contribution.



Anti-Myosin light chain 6B MYL6B Antibody

For Research Use Only. Not for use in diagnostic procedures.