

## Anti-MRP-S25 Antibody

Catalog Number: A14080-1

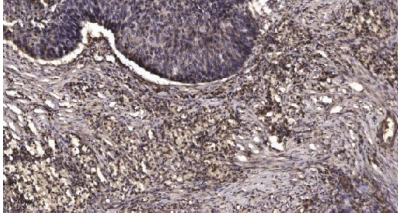
### Overview

Product Name	Anti-MRP-S25 Antibody
Reactive Species	Human, Mouse, Rat
Description	Boster Bio Anti-MRP-S25 Antibody catalog # A14080-1. Tested in WB, ELISA, IHC applications. This antibody reacts with Human, Mouse, Rat.
Application	ELISA, IHC, WB
Clonality	Polyclonal
Formulation	Liquid in PBS containing 50% glycerol, 0.5% stabilizing protein and 0.02% sodium azide. This antibody is supplied in a stabilized formulation. Compatibility with conjugation reactions depends on the chemistry of the conjugation method used. For conjugation methods that are not compatible with the stabilizing components present in this formulation, a carrier-free antibody format is required.
Storage Instructions	Store at -20°C for one year. For short term storage and frequent use, store at 4°C for up to one month. Avoid repeated freeze-thaw cycles.
Host	Rabbit
Uniprot ID	P82663

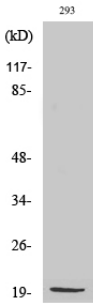
### Technical Details

Immunogen	The antiserum was produced against synthesized peptide derived from human MRPS25. AA range:124-173
Isotype	IgG
Form	Liquid
Concentration	1 mg/ml
Purification	Immunogen affinity purified
Suggested Dilutions	WB 1:500-2000 IHC 1:50-300 ELISA 1:2000-20000

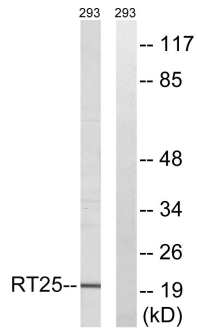
## Anti-MRP-S25 Antibody (A14080-1) Images



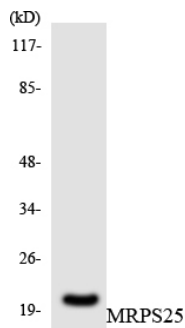
Immunohistochemical analysis of paraffin-embedded human Squamous cell carcinoma of lung. 1, Antibody was diluted at 1:200 (4° overnight). 2, Tris-EDTA,pH9.0 was used for antigen retrieval. 3,Secondary antibody was diluted at 1:200 (room temperature, 45min).



Western Blot analysis of various cells using MRP-S25 Polyclonal Antibody diluted at 1:2000



Western blot analysis of lysates from 293 cells, using MRPS25 Antibody. The lane on the right is blocked with the synthesized peptide.



Western blot analysis of the lysates from HepG2 cells using MRPS25 antibody.

### Submit a product review to Biocompare.com

Submit a review of this product to Biocompare.com to receive a \$20 Amazon.com giftcard! Your reviews help your fellow scientists make the right decisions. Thank you for your contribution.



Anti-MRP-S25 Antibody

For Research Use Only. Not for use in diagnostic procedures.