

Anti-MRP-S25 (K168) Antibody

Catalog Number: A14080S25

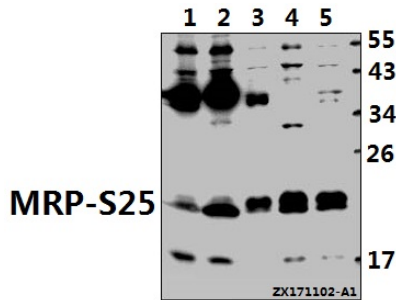
Overview

Product Name	Anti-MRP-S25 (K168) Antibody
Reactive Species	Human, Mouse, Rat
Description	Boster Bio Anti-MRP-S25 (K168) Antibody catalog # A14080S25. Tested in WB,IP applications. This antibody reacts with Human,Mouse,Rat.
Application	IP, WB
Clonality	Polyclonal
Formulation	Rabbit IgG, 1mg/ml in PBS with 0.02% sodium azide, 50% glycerol, pH7.2
Storage Instructions	Store at -20°C for one year. For short term storage and frequent use, store at 4°C for up to one month. Avoid repeated freeze-thaw cycles.
Host	Rabbit
Uniprot ID	P82663

Technical Details

Immunogen	Synthetic peptide, corresponding to amino acids 140-180 of Human MRP-S25.
Isotype	IgG
Form	Liquid
Concentration	1 mg/ml
Purification	The antibody was affinity-purified from rabbit antiserum by affinity-chromatography using epitope-specific immunogen and the purity is > 95% (by SDS-PAGE).
Suggested Dilutions	WB: 1:500-1:1000 IP: 1:10-100

Anti-MRP-S25 (K168) Antibody (A14080S25) Images



Western blot (WB) analysis of MRP-S25 (K168) pAb at 1:1000 dilution Lane1:CT26 whole cell lysate(40ug) Lane2:C6 whole cell lysate(40ug) Lane3:MCF-7 whole cell lysate(20ug) Lane4:HEK293T whole cell lysate(20ug) Lane5:HCT116 whole cell lysate(20ug)



Immunoprecipitation of HEK293T cell lysate using MRP-S25 (K168) pAb (Sepharose Bead Conjugate) #BD0048(lane 2 and lane 3) and Nonspecific IgG Control (Sepharose Bead Conjugate) #BD0048 (lane 4).Lane 1 is 30% input. The western blot was probed using MRP-S25 (K168).
“↑” □supernatant; “↓”(deposition □

IP:

-	+	+	-	MMP-S25(BS3880)
-	-	-	+	IgG(Rabbit)
-	+	+	+	ProteinG-Agarose
	↑	↓	↓	

Submit a product review to Biocompare.com

Submit a review of this product to Biocompare.com to receive a \$20 Amazon.com giftcard! Your reviews help your fellow scientists make the right decisions. Thank you for your contribution.



Anti-MRP-S25 (K168) Antibody

For Research Use Only. Not for use in diagnostic procedures.